

1 **Manuscript submitted to *Animal Behaviour* on 20<sup>th</sup> December 2018**

2

3 **Title:**

4 Personality homophily affects male social bonding in wild Assamese macaques (*Macaca*  
5 *assamensis*)

6 **Author names:**

7 Anja Ebenau<sup>1,2,3</sup>, Christoph von Borell<sup>3,4</sup>, Lars Penke<sup>3,4</sup>, Julia Ostner<sup>1,2,3</sup> and Oliver  
8 Schülke<sup>1,2,3</sup>

9 **Author affiliations:**

10 <sup>1</sup>Department of Behavioral Ecology, Johann-Friedrich-Blumenbach Institute for Zoology and  
11 Anthropology, University of Goettingen, Kellnerweg 6, 37077 Goettingen, Germany

12 <sup>2</sup>Research Group Social Evolution in Primates, German Primate Center, Leibniz Institute for  
13 Primate Research, Kellnerweg 4, 37077 Goettingen, Germany

14 <sup>3</sup>Leibniz ScienceCampus Primate Cognition, Kellnerweg 4, 37077 Goettingen, Germany

15 <sup>4</sup>Biological Personality Psychology, Georg Elias Mueller Institute of Psychology, University  
16 of Goettingen, Goßlerstraße 14, 37073 Goettingen, Germany

17

18 **Corresponding author:**

19 Anja Ebenau, Department of Behavioral Ecology, Johann-Friedrich-Blumenbach Institute for  
20 Zoology and Anthropology, University of Goettingen, Kellnerweg 6, 37077 Goettingen,  
21 Germany, Phone: +49 551 39 33926, Fax: +49 551 39 9637, E-Mail: [aebenau@gwdg.de](mailto:aebenau@gwdg.de)

22

23 **ABSTRACT**

24 Animal social bonds are defined as stable, equitable and strong affiliative and cooperative  
25 relationships similar to human friendships. Just as human friendships, social bonds are  
26 thought to function as alliances that generate adaptive benefits via support in critical  
27 situations. In humans, similarity in many sociodemographic, behavioural and intrapersonal  
28 characteristics leads to trust and is predictive of friendships. Specifically, personality  
29 homophily, that is the tendency of individuals to form social bonds with others who have a  
30 similar personality, may increase predictability and facilitate trust and reciprocity among  
31 partners with compatible behavioural tendencies. While evidence for social bonding in  
32 nonhumans is accumulating, far less is known about its predictors. Here, personality  
33 homophily effects on the formation and maintenance of social bonds are shown in twenty-four  
34 wild male Assamese macaques (*Macaca assamensis*), at Phu Khieo Wildlife Sanctuary,  
35 Thailand. Dyadic bond strength increased with increased similarity in the trait Connectedness  
36 (i.e. frequent and diverse neighbours in 5m proximity and pronounced social tolerance, as  
37 high rates of friendly approaches to and by others). To differentiate whether homophily  
38 indeed predicted bond formation or whether bonded males' personalities became more similar  
39 over time, we tested the stability of the connectedness traits in a subset of immigrating males  
40 that had to form new bonds. Connectedness in these males remained stable suggesting that  
41 males do not adapt their personality to their partner. Our results support the idea of a shared  
42 evolutionary origin of homophily as a partner choice strategy in human and non-human  
43 animals. The main selective advantage of personality similarity in animal social bonds may  
44 result from a more reliable cooperation among individuals with similar cooperative  
45 behavioural tendencies.

46 **Keywords:** personality, homophily, animal social bond, Assamese macaques, human  
47 friendship, partner choice

## 48 INTRODUCTION

49 In mammals and birds, social bonds are defined as stable, equitable and strong affiliative  
50 relationships similar to human friendships, and like friendships are thought to function as  
51 alliances that generate adaptive benefits via support in critical situations (Brown & Brown,  
52 2006; Cheney, 2011; Curry & Dunbar, 2013; DeScioli & Kurzban, 2009; Ostner & Schülke,  
53 2014, 2018; Schino, 2007; Silk, 2007). Bond strength promotes coalition formation (e.g.,  
54 Berghänel, Ostner, Schröder, & Schülke, 2011; Connor, Heithaus, & Barre, 2001; Gilby et al.,  
55 2013; Perry, Barrett, & Manson, 2004; Watts, 2002; Young, Majolo, Schülke, & Ostner,  
56 2014) and enhances cooperative success, possibly through increased trust in a bonded ally  
57 (across a wide range of taxa in birds and mammals: Braun & Bugnyar, 2012; Engelmann &  
58 Herrmann, 2016; Majolo et al., 2006; Marshall-Pescini, Schwarz, Kostelnik, Virányi, &  
59 Range, 2017; Massen, Ritter, & Bugnyar, 2015; Molesti & Majolo, 2016; Olson & Spelke,  
60 2008; Wood, Kim, & Li, 2016). In risky situations, when an individual has to choose with  
61 whom to cooperate, social bonds spare situational judgement and cognitive effort of assessing  
62 partner quality and honesty of signals, since they reduce uncertainty about the partner's  
63 response (Cronin, 2012; Molesti & Majolo, 2016; Noë, 2006; Schino & Aureli, 2009).  
64 According to standard evolutionary models, partner choice mechanisms are key to initiate and  
65 maintain cooperative behaviours, and can lead to the formation of differentiated social  
66 relationships from weak ties to social bonds in animal groups (Campennì & Schino, 2014;  
67 Noë, 2006; Schino & Aureli, 2016).

68 Partner choice for the formation of social bonds may be guided by homophily, that is the  
69 tendency of individuals to form ties with similar others (McPherson, Smith-Lovin, & Cook,  
70 2001), as it may enhance predictability and trust in potential bond partner (Dunbar, 2018;  
71 Massen & Koski, 2014; Weinstein & Capitanio, 2012). Animal and human social structure in  
72 terms of spatial or socio-ecological associations partly results from assortment by age, sex,

73 kinship, body size, reproductive state, or genotype (e.g., Fowler, Settle, & Christakis, 2011;  
74 Fu, Nowak, Christakis, & Fowler, 2012; McPherson et al., 2001).

75 Fitness-related advantages of choosing self-similar bond partners may arise from a shared  
76 mode of communication and more efficient coordination and cooperation (Fu et al., 2012;  
77 Noë, 2006). In theoretical models, homophily enhances the evolution of cooperation and  
78 facilitates the spread of cooperation in human and nonhuman animal networks (Antal,  
79 Ohtsuki, Wakeley, Taylor, & Nowak, 2009; Chiang & Takahashi, 2011; Nowak, Tarnita &  
80 Antal, 2010; Riolo, Cohen, & Axelrod, 2001; Rivera, Soderstrom, & Uzzi, 2010; Voelkl &  
81 Kasper, 2009).

82 In humans, similarity in many sociodemographic, behavioural and intrapersonal  
83 characteristics, as well as sharing values, leads to trust and predicts friendships more than  
84 dissimilar characteristics (Bahns, Crandall, Gillath, & Preacher, 2016; Curry & Dunbar, 2013;  
85 Kandel, 1978; McPherson et al., 2001; Selfhout, Branje, & Meeus, 2007; Ziegler & Golbeck,  
86 2007). Trust also plays a crucial role in forming and maintaining relationships in nonhuman  
87 animals, particularly in non-kin (Dunbar, 2018; Engelmann & Herrmann, 2016; Massen &  
88 Koski, 2014; Massen et al., 2015). Chimpanzees selectively trust bonded partners (Engelmann  
89 & Herrmann, 2016), suggesting that trust in reciprocity is not unique to humans, but has  
90 deeper evolutionary roots (Engelmann, Herrmann, & Tomasello, 2015). In male Barbary  
91 macaques the probability that a bystander of an aggressive conflict rejects a recruitment for  
92 help decreased with the strength of the affiliative relationship between the bystander and the  
93 recruiter (Young et al., 2014), i.e. the individual in need can trust that bonded partners will  
94 provide support.

95 Trust and reciprocity may be facilitated specifically via homophily in personality (Hampson,  
96 2011; Massen, 2017; Massen & Koski, 2014; Scarr & McCartney, 1983). Personality is  
97 defined as inter-individual differences in behaviour, affect and cognition that are relatively

98 consistent across time and (Réale, Reader, Sol, McDougall, & Dingemanse, 2007).

99 Personality homophily has been found in human spouses (e.g., Byrne, 1997; Klohnen & Luo,  
100 2003; Youyou, Stillwell, Schwartz, & Kosinski, 2017) and improves reproductive success in  
101 monogamous rodents, birds, and fish (Ariyomo & Watt, 2013; Dingemanse, Both, Drent, &  
102 Tinbergen, 2004; Gabriel & Black, 2012; Rangassamy, Dalmas, Féron, Gouat, & Rödel,  
103 2015; Schuett, Dall, & Royle, 2011). Similarity in certain personality traits is associated with  
104 the strength of social bonds in chimpanzees (Massen & Koski, 2014), higher-quality  
105 relationships in capuchin monkeys (Morton, Weiss, Buchanan-Smith, & Lee, 2015),  
106 relationship stability from one year to the next in juvenile rhesus macaques (Weinstein &  
107 Capitanio, 2012) and pairing-success of adult rhesus macaques in a laboratory setting  
108 (Capitanio, Blozis, Snarr, Steward, & McCowan, 2015). Beyond dyadic relationships, group-  
109 level similarity in personality traits facilitates cooperation among all group members in  
110 cooperative-breeding common marmosets (Koski & Burkart, 2015).

111 Friends with similar personalities may perceive, interpret, and react to the world around them  
112 in a similar way (neuronal homophily; Parkinson, Kleinbaum, & Wheatley, 2018). Friends  
113 share dispositions and agree on values, opinions and activities, which may trigger a positive  
114 affective response that increases enjoyment of each other's company, and strengthens the self-  
115 concept (Baumeister & Leary, 1995; Campbell, Sedikides, Reeder, & Elliot, 2000; Clore &  
116 Byrne, 1974; Hampson, 2011; Nelson, Thorne, & Shapiro, 2011; Nelson et al., 2011; Selfhout  
117 et al., 2010). Personality similarity among friends may further reduce uncertainty during  
118 acquaintanceship and enhances predictability by increasing the ease and clarity of  
119 communication (Berger & Calabrese, 1975; Neyer, Banse, & Asendorpf, 1999; Selfhout et al.,  
120 2010; van Zalk & Denissen, 2015). With respect to the "Big Five" personality model  
121 (Digman, 1990; John, Srivastava, & Pervin, 1999), friends are mostly found to be similar in  
122 two dimensions (e.g., Blaz, 1983; Caspi, Roberts, & Shiner, 2005; Feiler & Kleinbaum, 2015;

123 Jensen-Campbell et al., 2002: extraversion, a dimension capturing variation in activity,  
124 sociability, positive emotionality, risk seeking and assertiveness, and agreeableness which  
125 describes variation in being kind and considerate, empathic, prosocial and cooperative (van  
126 Aken & Asendorpf, 2018). Given the potentially shared evolutionary history of social bonds  
127 and human friendships (Baumeister & Leary, 1995; Seyfarth & Cheney, 2012; Silk, 2002),  
128 and the fact that shared neural and physiological mechanisms underlie social behaviours in  
129 humans and other animals (Brent, Chang, Gariépy, & Platt, 2014; Chang et al., 2013; Dunbar,  
130 2010; Meunier, 2018), it has been proposed that homophily in human social partner choice  
131 has a biological basis (Apicella, Marlowe, Fowler, & Christakis, 2012; Bahns et al., 2016; Fu  
132 et al., 2012; Massen & Koski, 2014; Parkinson et al., 2018).

133 Here we investigated whether patterns of affiliation correspond to homophily in personality  
134 traits in wild male Assamese macaques. Apart from an unpublished PhD thesis (Tkaczynski,  
135 2017) these studies all used captive animals and assessed personality either with behavioural  
136 or with trait rating (i.e. questionnaire) data. We add ecological validity by studying wild  
137 animals. Male Assamese macaques are particularly well-suited for this study, because males  
138 change groups several times during their life (Ostner, Vigilant, Bhagavatula, Franz, &  
139 Schülke, 2013), and because males in the study population form differentiated social bonds  
140 that convey fitness benefits via increased paternity success (Kalbitz, Ostner, & Schülke, 2016;  
141 Schülke, Bhagavatula, Vigilant, & Ostner, 2010).

142 Instead of predicting homophily for a particular personality dimension, we followed an  
143 explorative approach and expected to find homophily in any of the five personality traits we  
144 defined for these males, namely Connectedness, Aggressiveness, Sociability, Vigilance, and  
145 Confidence (Ebenau, Penke, Ostner, & Schülke, under review). In humans the social  
146 personality traits extraversion and agreeableness are similar among friends, but other traits  
147 may affect social partner choice as well: bonded partners are more similar in boldness in

148 chimpanzees (Massen & Koski, 2014) and traits like aggressiveness may be more relevant in  
149 some species as it is shaping the social style in macaques (Adams et al., 2015). As closely  
150 bonded individuals pull each other to similar ranks via support in agonistic interactions with  
151 the benefits of increased access to food and mates (Chapais, 1995; Schülke et al., 2010), we  
152 expected and therefore controlled for an effect of dominance rank difference on dyadic social  
153 bond measures. We expect that similarity in personality predicts bond formation. To rule out  
154 that this correlation results from bonded partners adapting their personalities over time, we  
155 assess personality stability in males changing social groups during the study period, which is  
156 accompanied by changing affiliation partners.

157

## 158 **METHODS**

159 Fieldwork was conducted in the Phu Khieo Wildlife Sanctuary (PKWS: 16°5'–35'N,  
160 101°20'–55'E) which is part of the ca. 6500 km<sup>2</sup> interconnected and well-protected Western  
161 Isaan forest complex in north-eastern Thailand (Borries, Larney, Kreetiyutanont, & Koenig,  
162 2002). The study area is covered by hill evergreen forest and harbours a diverse community of  
163 large mammals and predators (Borries et al., 2002) indicative of very low levels of human  
164 disturbance. The field site was established in 2005, study subjects lived in four fully  
165 habituated groups, and were followed from April 2014 (ASM and AOM group) or October  
166 2014 (ASS and AOS group) through March 2016. Group sizes at the beginning of behavioural  
167 data collection are shown in Table A1.

168

### 169 *Personality assessment*

170 We applied a multi-method approach based on analyses of trait ratings (TR) and behavioural  
171 codings (BC), which allowed for testing construct validity of the quantified personality

172 structures (for details see Ebenau et al., under review). In brief, individuals were rated twice  
173 in 2015 and 2016 on the 54 item Hominoid Personality Questionnaire (HPQ; King &  
174 Figueredo, 1997; Weiss et al., 2009). Each adjective item was defined within the context of  
175 general behaviours common to primates. For example, 'fearful' was defined as “Subject reacts  
176 excessively to real or imagined threats by displaying behaviours such as screaming,  
177 grimacing, running away or other signs of anxiety or distress.” Data were processed by  
178 analysing rater performance, applying interrater-reliability (ICC; Shrout & Fleiss, 1979) with  
179 a cut-off criterion of  $> 0.4$ , and examining temporal stability from one year to the next. After  
180 data reduction, 43 adjective items were submitted to factor analysis, revealing four  
181 dimensions: Aggressiveness<sub>TR</sub>, Confidence<sub>TR</sub>, Activity<sub>TR</sub> and Friendliness<sub>TR</sub>. To validate the  
182 rating data, behavioural codings were analysed for 24 adult males. Behavioural data were  
183 collected from April 2014 to March 2016 concurrently for behavioural personality assessment  
184 as well as for relationship measures, and is described in detail below. Eighteen temporally  
185 stable variables were reduced to four factors: Connectedness<sub>BC</sub>, Aggressiveness<sub>BC</sub>,  
186 Sociability<sub>BC</sub> and Vigilance<sub>BC</sub>. Construct validity assessments suggested congruence between  
187 most dimensions from trait ratings and behavioural codings, with the exception of the  
188 Confidence<sub>TR</sub> trait rating domain, which therefore was added as a fifth dimension to the  
189 behavioural coding personality constructs (for details see Ebenau et al., under review).

190



191 **Table 1**

192 Summary of integrative personality constructs of Assamese macaques, derived from  
193 behavioural codings<sub>SBC</sub> and trait ratings<sub>STR</sub>.

---

Personality traits	Description
Connectedness <sub>SBC</sub>	Frequent and diverse neighbours in 5m proximity and pronounced social tolerance, expressed as high rates of friendly approaches to and by others
Aggressiveness <sub>SBC</sub>	Quits body contact and grooming more than others, high rates of physical and mild aggression towards others
Sociability <sub>BC</sub>	High rates of friendly behaviour and more time in body contact and grooming, as well as more frequent initiation of affiliations; more often outside the group centre
Vigilance <sub>BC</sub>	High proportion of vigilant behaviour in activity budget
Confidence <sub>TR</sub>	High scores of dominant, vigorous, bold and decisive attributes and leader qualities

---

194

195 *Behavioural data collection*

196 We collected 4628 hours of focal animal observations (Altmann, 1974) from 24 adult males  
197 (mean per subject = 193 h; range = 86 h – 284 h) of the four study groups. These focal  
198 animals were included in the study, since they were present more than three months within  
199 one year of the two-year study period. Individuals were followed for 40 minutes with  
200 continuous recording of all approaches and departures within 1.5 m of the focal animal, and  
201 all affiliative and agonistic social interactions, with onset and termination for duration  
202 behaviours (e.g., approaches, body contact and grooming), as well as with directionality and  
203 the identities of interaction partners. Activity of the focal animal was recorded instantaneously  
204 at 2-minutes intervals. Every 10 min we recorded the identities of all individuals within a 5 m  
205 sphere around the focal animal. An effort was made to equally distribute observation time  
206 across individuals and time of the day. Quantitative behavioural data collected with a  
207 standardized ethogram were used to assess relationship strength.

208

209 *Dyadic relationship measure*

210 For relationship assessment, we used data of two half-year periods with rather stable male  
211 group composition (October 2014–March 2015, October 2015–March 2016). Still, some adult  
212 males were absent for some time within these periods. We set two criteria and only included  
213 individuals, if they were either present in the group for at least half the time we spent with the  
214 group within the half-year period, or their observation hours did not fall below half the group  
215 mean within the half-year period. The remaining periods were too unstable to infer reliable  
216 relationship measures due to migration events as well as alpha male rank changes. Two of  
217 three adult males migrated from ASS into ASM group within the second year of observation,  
218 leaving only one adult male, thus, just one half-year period (October 2014–March 2015) was  
219 included for ASS group.

220 We used the dyadic sociality index (DSI; Silk, Cheney, & Seyfarth, 2013) to measure the  
221 strength of dyadic relationships, with frequencies and durations of correlated affiliative  
222 behaviours (mean  $\tau_{(rw,ave)} = 0.491 \pm 0.103$ ), grooming, body contact and close proximity < 1.5  
223 m. Since grooming frequencies between adult males tend to be quite low and to prevent  
224 inflation effects, we excluded grooming from the calculation when the average frequency  
225 across all dyads in a group was below 1.5. This was done for the second half-year period  
226 (October 2015–March 2016) for ASM and AOS group. For body contact and close proximity,  
227 we only included interactions longer than 10 seconds. Dyadic interaction rates and durations  
228 of overlaid behavioural states were subtracted from one another, and calculations were  
229 controlled for observation times of each partner. We calculated the index as follows:

230

231 
$$DSI = \left( \frac{FP_{ij} + DP_{ij} + FB_{ij} + DB_{ij} + FG_{ij} + DG_{ij}}{FP_{ave} + DP_{ave} + FB_{ave} + DB_{ave} + FG_{ave} + DG_{ave}} \right)$$

232

233 Here  $ij$  is the male-male dyad,  $ave$  is the group mean across all male-male dyads,  $\mathbf{F}$  is the  
234 frequency and  $\mathbf{D}$  the total duration of the behaviours:  $\mathbf{P}$  as close proximity < 1.5 m,  $\mathbf{B}$  as body  
235 contact and  $\mathbf{G}$  as grooming. For a detailed description of dyadic CSI (i.e. DSI) calculation and  
236 its application in male Assamese macaques see Kalbitz et al. (2016). The index is a linear  
237 measure with a minimum of zero and a group mean of one, and increases with the strength of  
238 the affiliative relationship between two partners. Weak relationships are defined by values  
239 between zero and one, and values greater than 1 reflect stronger affiliative relationships (Silk,  
240 Alberts, & Altmann, 2006).

241

#### 242 *Dominance rank*

243 Male Assamese macaques can be ordered along a linear dominance hierarchy (Ostner,  
244 Heistermann, & Schülke, 2008), where higher-ranked individuals dominate all individuals of  
245 lower rank, thus all dyads have a dominant-subordinate relation. We calculated a dominance  
246 hierarchy from decided dyadic agonistic interactions as well as unprovoked submissive  
247 signals, e.g., silent-bared teeth (Ostner et al., 2008). Data on conflicts were recorded during  
248 continuous and ad libitum sampling for the same half-year period as the dyadic relationship  
249 measures. On average, we included in our analysis of dominance rank 13.7 and 16.3  
250 interactions per individual in the two study periods respectively, which exceeds the value of  
251 10 proposed for steep hierarchies (Sánchez-Tójar, Schroeder, & Farine, 2018). A winner/loser  
252 matrix of these interactions was used to calculate the standardized normalized David's score  
253 (nDS) using DomiCalc (“compete” R-package; Schmid & de Vries, 2013). Due to group  
254 composition and alpha male rank changes we calculated an average rank for each period as a  
255 sum of hierarchical rank multiplied by the number of months the rank position was occupied  
256 divided by 6.

257

258 *Statistical analyses*

259 We ran a linear mixed model (Baayen, 2008) to evaluate the effect of absolute differences in  
260 factor scores in each of the five personality dimensions (the more similar each social bond  
261 pair, the smaller the difference values), on the response variable social bonds, i.e. DSI scores.  
262 Due to the expected effect of absolute dominance rank differences on DSI, we included it as  
263 fixed effect. Since group composition changed between years, the same groups in the two  
264 consecutive years were handled separately, so we included a combined variable ‘group.year’  
265 as fixed effect with 7 levels. As random effects we included ‘identity of dyad’ and  
266 ‘dominance rank difference’, calculated per half year period, controlling for the fact that they  
267 are dependent measures. Finally, random slopes were modelled for a dyads and dominance  
268 rank difference variation in DSI along ‘group.year’. We did not predict interaction effects in  
269 the model. The DSI scores were log transformed and all variables, except for ‘group.year’,  
270 were z-transformed (to a mean of zero and a standard deviation of one). The model was fitted  
271 in R (R Core Team 2017) using the function ‘lmer’ of the R-package ‘lme4’ (version 1.1-15;  
272 Bates et al., 2014).

273 Our visual inspection of a qq-plot, and the residuals plotted against fitted values, did not  
274 reveal obvious deviations from the model assumptions of normally distributed and  
275 homogeneous residuals.

276 The function ‘vif’ of the R-package ‘car’ (Fox & Weisberg, 2011; applied to a standard linear  
277 model excluding the random effects) indicated collinearity to be no issue (largest VIF=1.13;  
278 (Fidell & Tabachnick, 2003; Field, 2000; Quinn & Keough, 2002; Zuur, Ieno, & Elphick,  
279 2010). We tested the full against the null model, comprising only ‘group.year’ as fixed effect  
280 and the random effects as described above. We fitted both models using Maximum  
281 Likelihood (rather than Restricted Maximum Likelihood; Bolker et al., 2009) and conducted a  
282 likelihood ratio test (R-function ‘anova’ with argument test set to "Chisq"; Dobson, 2010;

283 Forstmeier & Schielzeth, 2011). To extract p-values for the individual effects, we used the R-  
284 function ‘drop1’ (with argument test set to "Chisq"; Barr, Levy, Scheepers, & Tily, 2013),  
285 based on likelihood ratio tests comparing the full to respective reduced models. Confidence  
286 intervals (lower: 2.5%, upper: 97.5%) for the estimates were computed with the function  
287 ‘confint.merMod’ of the R-package ‘lme4’ (version 1.1-15; Bates et al., 2014). The sample  
288 size for this model was a total of 140 observations made on 101 dyads and 40 absolute  
289 dominance rank differences.

290 We tested for potential circularity problems arising from using the same behavioural variables  
291 (body contact, grooming and friendly approach) to assess personality structure, as well as  
292 affiliative relationship strength (DSI). In case of a circularity issue, on the one hand we would  
293 expect a strong positive Pearson correlation between the two measures across individuals. We  
294 correlated the individual personality scores with the sum DSI of the top two social bond  
295 partners for each individual. On the other hand, across dyads we would expect a strong  
296 positive correlation of DSI and the mean of both partners’ personality scores on a social  
297 dimension. Pearson correlations with individual and dyadic Connectedness and Sociability  
298 scores were performed for each half year period.

299 To assess whether males adjusted their personality after migrating into a new group with new  
300 partners, we correlated each of the variables loading high on Connectedness (as quantified  
301 from the two-year data collection period; Table 2) across the six migrating males from one  
302 year to the next. We used Pearson correlation and variables were aggregated for April 2014–  
303 March 2015 and April 2015–March 2016.

304

305

306

307 *Ethical statement*

308 Our animal research was completely non-invasive and approved by the Department of  
309 National Parks, Wildlife and Plant Conservation (DNP), Thailand (permit 0002/2424). This  
310 work followed the ASAB guidelines for the treatment of animals in behavioural research and  
311 teaching, and adhered to standards as defined by the European Union Council Directive  
312 2010/63/EU on the protection of animals used for scientific purposes.

313

314 **RESULTS**

315 The full model describing variation in dyadic relationship strength was significantly different  
316 from the null model (likelihood ratio test:  $\chi^2 = 14.69$ ,  $df = 6$ ,  $P < 0.05$ ). The Connectedness  
317 score (likelihood ratio test:  $\chi^2 = 5.14$ ,  $df = 1$ ,  $P = 0.023$ ) and the dominance rank difference  
318 (likelihood ratio test:  $\chi^2 = 4.11$ ,  $df = 1$ ,  $P = 0.043$ ) had significant effects on social bonds  
319 (Table 2; Fig. 1 and 2). In accordance with previous findings, that closely bonded individuals  
320 pull each other to similar ranks (Schülke et al., 2010), we found that bond strength was  
321 associated with similarity in dominance rank. The smaller the Connectedness score of a dyad,  
322 i.e. the more similar two partners are in that personality dimension, the higher the DSI score,  
323 i.e. the stronger the social bond. Since all variables entered into the model were z-  
324 standardized, the results can be interpreted as follows: if the absolute difference in the  
325 Connectedness score of a dyad increases one standard deviation then social bond strength will  
326 decrease by about 0.18 standard deviations, with all other control variables held on average.  
327 In other words, if the Connectedness score of a dyad increases one unit then social bond  
328 strength will decrease about 0.09 units.

329 The graph shows that with high difference scores in Connectedness, the DSI of a dyad is far  
330 below the meaningful threshold of one, which marks strong social relationships (i.e. social

331 bonds). The raw data are quite scattered probably due to the relatively small sample size and  
 332 relatively short period to measure the social bond strength. We pooled data from four different  
 333 study groups and two time periods. These were rather stable periods within an unstable  
 334 observation period with alpha rank changes and migration events, which are influencing the  
 335 social bonds of all group members. However, the narrow confidence intervals of the model  
 336 prediction are indicative of reliable results. The personality effects are rather small like in the  
 337 other primate studies (effect range: |0.043–2.02|; Capitanio et al., 2015; Massen & Koski,  
 338 2014; Morton et al., 2015; Weinstein & Capitanio, 2012) as well as in humans (Feiler &  
 339 Kleinbaum, 2015; Jensen-Campbell et al., 2002; Roberts, Kuncel, Shiner, Caspi, & Goldberg,  
 340 2007).

341 **Table 2**

342 Effects of personality similarity on the strength of dyadic social bonds. Bond strength is the  
 343 log standardized dyadic composite sociality score (DSI), and similarity in each of five  
 344 personality dimensions was modelled as the absolute difference in personality scores between  
 345 partners and dominance similarity as absolute dominance rank difference. All variables z-  
 346 transformed. Significant results marked in bold.

Variable	Estimate	SE	CI <sub>lower</sub>	CI <sub>upper</sub>	$\chi^2$	Df	P
(Intercept)	-0.01	0.16	-0.33	0.31	(1)	(1)	(1)
Aggressiveness <sub>BC</sub> score <sup>(2)</sup>	-0.09	0.08	-0.24	0.07	1.32	1	0.251
Confidence <sub>TR</sub> score <sup>(3)</sup>	-0.02	0.08	-0.19	0.16	0.03	1	0.853
Connectedness <sub>BC</sub> score <sup>(4)</sup>	<b>-0.18</b>	<b>0.08</b>	<b>-0.33</b>	<b>-0.02</b>	<b>5.14</b>	<b>1</b>	<b>0.023</b>
Sociability <sub>BC</sub> score <sup>(5)</sup>	-0.03	0.08	-0.19	0.13	0.14	1	0.706
Vigilance <sub>BC</sub> score <sup>(6)</sup>	-0.10	0.08	-0.26	0.05	1.77	1	0.183
Dominance rank difference <sup>(7)</sup>	<b>-0.19</b>	<b>0.09</b>	<b>-0.37</b>	<b>-0.01</b>	<b>4.11</b>	<b>1</b>	<b>0.043</b>
Group.year	(8)	(8)	(8)	(8)	3.81	6	0.702

347 <sup>(1)</sup>not shown, because having a limited interpretation.

348 <sup>(2)</sup>z-transformed, original values with mean  $\pm$  SD: 1.18 $\pm$ 0.79

349 <sup>(3)</sup>z-transformed, original values with mean  $\pm$  SD: 1.24 $\pm$ 0.85

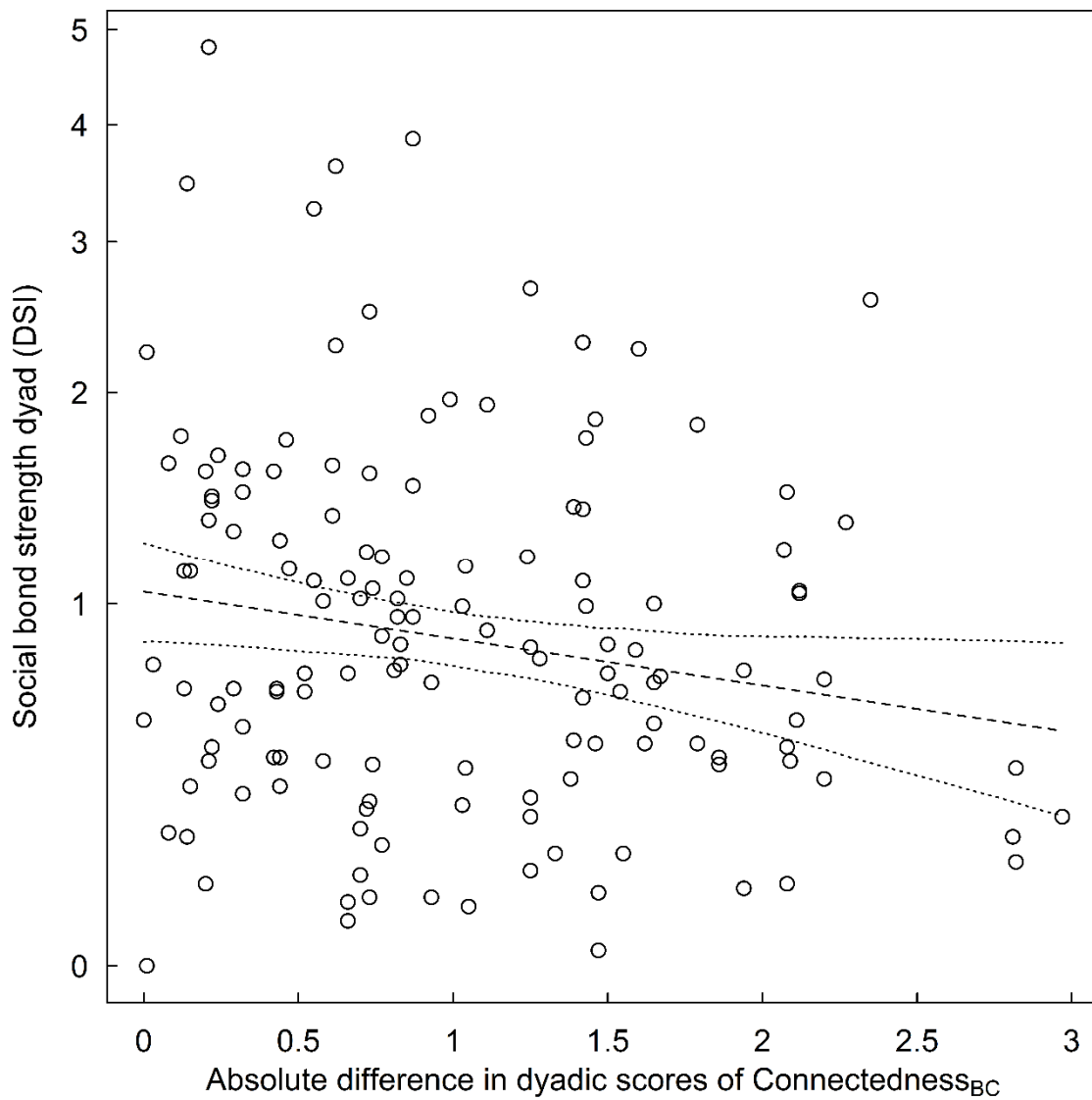
350 <sup>(4)</sup>z-transformed, original values with mean  $\pm$  SD: 1.01 $\pm$ 0.70

351 <sup>(5)</sup>z-transformed, original values with mean  $\pm$  SD: 1.10 $\pm$ 1.10

352 <sup>(6)</sup>z-transformed, original values with mean  $\pm$  SD: 1.12 $\pm$ 0.92

353 <sup>(7)</sup>z-transformed, original values with mean  $\pm$  SD: 2.98 $\pm$ 1.88

354 <sup>(8)</sup>7 levels of group.year reveal no effect and are not shown.

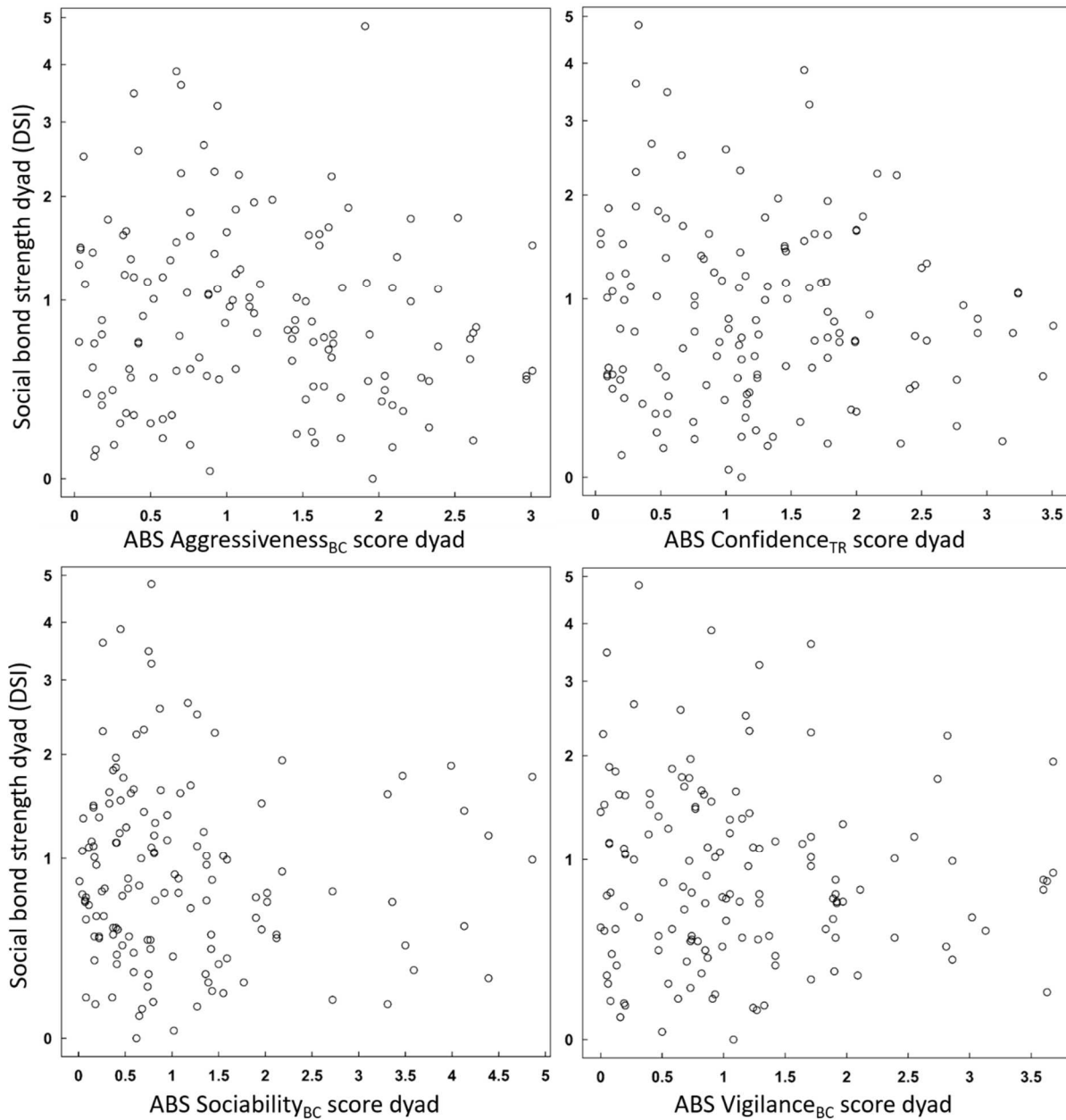


355

356 **Figure 1:** Effect of personality similarity on bond strength. Linear mixed model plot with the  
357 significant effect of absolute difference in dyadic scores of Connectedness on log  
358 standardized social bond strength (DSI). The dashed line is the model prediction and dotted  
359 lines represent its bootstrapped 95% confidence intervals. Total N with 101 dyads and 40  
360 dominance rank differences. All variables z-transformed.

361





362

363 **Figure 2:** Other personality traits (absolute difference (ABS) in dyadic scores) with no effect  
364 on social bond strength (log standardized DSI). Total N with 101 dyads and 40 dominance  
365 rank differences. All variables z-transformed.

366

367 The strength of affiliative relationships was explicitly related to the similarity in personality  
368 between partners and did not result from dyads or individuals scoring high or low on social  
369 personality dimensions. DSI did not correlate with mean Connectedness of a dyad (Oct2014–  
370 Mar2015:  $r_{\text{dyadic}} = 0.139$ ,  $p = 0.227$ ,  $n = 77$ ; Oct2015–Mar2016:  $r_{\text{dyadic}} = 0.054$ ,  $p = 0.675$ ,  $n = 63$ )  
371 and mean Sociability scores per dyad (Oct2014–Mar2015:  $r_{\text{dyadic}} = -0.135$ ,  $p = 0.242$ ,  $n = 77$ ;  
372 Oct2015–Mar2016:  $r_{\text{dyadic}} = 0.246$ ,  $p = 0.052$ ,  $n = 63$ ; Fig. A1). Similarly, the strength of the  
373 strongest bonds this individual formed (i.e. sum of top two DSI values) did not correlate with  
374 individual Connectedness (Oct2014–Mar2015:  $r_{\text{individual}} = 0.076$ ,  $p = 0.722$ ,  $n = 24$ ; Oct2015–  
375 Mar2016:  $r_{\text{individual}} = -0.004$ ,  $p = 0.985$ ,  $n = 21$ ) and Sociability scores (Oct2014–Mar2015:  
376  $r_{\text{individual}} = -0.155$ ,  $p = 0.471$ ,  $n = 24$ ; Oct2015–Mar2016:  $r_{\text{individual}} = 0.168$ ,  $p = 0.468$ ,  $n = 21$ ;  
377 Fig. A2).

378

### 379 *Friendship formation*

380 For our small subset of six migrating individuals, the variables loading on the Connectedness  
381 dimension were positively correlated from before to after the migration for variables active,  
382 alone, neighbour diversity and tolerance (mean  $r = 0.817$ ;  $p = 0.02$ – $0.1$ ; Table 3), with the  
383 exception of friendly approach ( $r = 0.041$ ;  $p = 0.94$ ; Table 3).

384

385 **Table 3**

386 Stability in variables loading on the Connectedness personality domain in six males that  
387 changed groups.

Behavioural variable	Pearson's $r$	$p$ -value
active	0.879	0.02
alone	0.724	0.10
friendly approach	0.041	0.94
neighbour diversity	0.860	0.03
tolerance	0.805	0.05

388

389

390 **DISCUSSION**

391 Consistent with the idea that partner choice in social bond formation is guided by personality  
392 homophily, male Assamese macaques chose bond partners with similar levels of  
393 Connectedness. Similarity in Connectedness most likely predicted social bond formation and  
394 not the other way around, because males did not change their personality after migrating to a  
395 new group. In the following we will compare these results with personality homophily in  
396 humans, discuss its adaptive value, evidence from animal mating pairs and other types of  
397 animal social bonds, and why partners are similar in social personality traits and not in other  
398 dimensions. We discuss the role of tolerance in bonding and cooperation and their neural  
399 basis and consider alternative theories for the social effects of partners' personality.

400 Our result that individuals more similar in Connectedness form stronger social bonds supports  
401 the hypothesis of a shared evolutionary origin of personality homophily as partner choice  
402 strategy in human and non-human primates (Bahns et al., 2016; Massen & Koski, 2014). In  
403 humans the personality dimensions most closely matched in friends are extraversion and  
404 agreeableness (e.g., Blaz, 1983; Caspi et al., 2005; Dishion, Patterson, Stoolmiller, & Skinner,

405 1991; Ilmarinen, Vainikainen, Verkasalo, & Lönnqvist, 2017; Maaß, Lämmle, Bensch, &  
406 Ziegler, 2016; Markey & Kurtz, 2006; van Zalk & Denissen, 2015; Youyou et al., 2017),  
407 which partly resembles our findings. Aspects of the Connectedness trait, like proximity, social  
408 tolerance, and friendly approach, roughly correspond to the sociable or affiliative facets of  
409 extraversion associated with enjoyment of social interactions (Denissen & Penke, 2008). Our  
410 sociability domain (i.e. high rates of friendly behaviour and more time in body contact and  
411 grooming, as well as more frequent initiation of affiliations) has more overlap with the  
412 agreeableness dimension in humans, where individuals scoring higher in agreeableness are  
413 more interested in maintaining positive social relationships (Denissen & Penke, 2008). Unlike  
414 in humans, homophily regarding this second social personality dimension did not predict  
415 social bonds.

416 The main selective advantage of personality similarity in friendships as well as animal social  
417 bonds may result from a more reliable and thus more successful cooperation among  
418 individuals with similar (cooperative) behavioural tendencies via facilitated coordination,  
419 communication and reciprocity, as well as reduced uncertainty and conflict (Asakawa-Haas,  
420 Schiestl, Bugnyar, & Massen, 2016; Bahns et al., 2016; Chiang & Takahashi, 2011; Curry &  
421 Dunbar, 2013; Fu et al., 2012; Gabriel & Black, 2012; Koski & Burkart, 2015; Massen &  
422 Koski, 2014; Riolo et al., 2001; Schuett et al., 2011). Humans cultivate cooperative  
423 relationships sustained by emotional closeness and reciprocity of support (Dunbar, 2018;  
424 Hruschka & Henrich, 2006; Rand & Nowak, 2013; Wrzus & Neyer, 2016)(Dunbar, 2018;  
425 Hruschka & Henrich 2006; Rand & Nowack, 2013; Wrzus & Neyer, 2016), whereby people  
426 preferentially form ties with others who share similar cooperative behavioural tendencies  
427 (Apicella et al., 2012). Extraversion and agreeableness are linked to motivation for  
428 cooperative activities as well as cooperative skills. For instance, people scoring high in these  
429 dimensions have greater enthusiasm toward cooperation and are more trusting of others

430 (Adali & Golbeck, 2012; Ashton, Paunonen, Helmes, & Jackson, 1998; Hirsh & Peterson,  
431 2009; Lu & Argyle, 1991; Ross, Rausch, & Canada, 2003; but see also: Koole, Jager, van den  
432 Berg, Vlek, & Hofstee, 2001).

433 Animal mating pairs of partners with similar level in exploration tendency (rodents:  
434 Rangassamy et al., 2015; Steller's jays: Gabriel & Black, 2012; great tits: Dingemanse et al.,  
435 2004; zebra finches: Schuett et al., 2011) and boldness (guppies: Ariyomo & Watt, 2013)  
436 express higher reproductive success, and successful cooperative-breeding common marmosets  
437 show group-level similarity in both traits (Koski & Burkart, 2015). The role of similarity in  
438 social personality traits remains underexplored. Exploration may be more directly linked to  
439 helping behaviour, as demonstrated in a cooperative-breeding cichlid (Bergmüller &  
440 Taborsky, 2007) and choices for breeding partners may differ in choices for other partnerships  
441 where social personality traits may be more relevant (Koski, 2014).

442 Across group members, chimpanzees and Capuchin monkeys show proximity driven, i.e.  
443 social tolerance related, personality homophily in social relationships (Massen & Koski, 2014;  
444 Morton et al., 2015). Further, in a trait rating study with juvenile rhesus macaques, an  
445 equitability dimension (e.g., calmer, more easygoing, less active), which also includes aspects  
446 of social tolerance, correlated with relationship stability (Weinstein & Capitanio, 2012).  
447 However, in a social network study with wild Barbary macaques, it was not similarity in  
448 social tolerance but excitability (contains elements related to low impulse control: excitable,  
449 impulsive, erratic and disorganized) that was correlated with spatial association (Tkaczynski,  
450 2017), albeit this effect was not seen in grooming networks.

451 More generally, social tolerance (i.e. tolerating the proximity of others), as well as social  
452 grooming behaviour, are considered as prerequisites for animal social bonds, and, like  
453 friendships, they are further assumed to require mutuality and positive interactions (Asakawa-  
454 Haas et al., 2016; Brosnan et al., 2015; Massen, Sterck, & De Vos, 2010; van Zalk &

455 Denissen, 2015; Watts, 2002). Considering homophily in Connectedness as partner choice  
456 mechanisms in Assamese macaques, similar needs of proximity and similar level of social  
457 tolerance (scoring either high or low in Connectedness), may be associated with increased  
458 trust in reciprocal relations with bond partners, to maintain bonds and facilitate cooperation  
459 (Campenni & Schino, 2014; Laakasuo, Rotkirch, Berg, & Jokela, 2016; Massen & Koski,  
460 2014). Cooperative success and bond maintenance are intertwined regarding social bonds as  
461 alliances that generate adaptive benefits via support in critical situations (DeScioli &  
462 Kurzban, 2009; Massen & Koski, 2014; Schülke et al., 2010; Seyfarth & Cheney, 2012).  
463 Mutual coalitionary support helps bond partners to attain and maintain high social status,  
464 which is linked to reproductive success in male Assamese macaques (Schülke et al., 2010;  
465 Sukmak, Wajjwalku, Ostner, & Schülke, 2014). In Barbary macaques, it was demonstrated  
466 experimentally that strong social bonds positively influenced the maintenance of cooperation  
467 over a long period (Molesti & Majolo, 2016).

468 Social tolerance (or other traits in other species) may be correlated with cooperativeness,  
469 given that correlations between different behaviours are assumed to occur among different  
470 functional contexts (behavioural syndromes: Bergmüller, Schürch, & Hamilton, 2010; Sih,  
471 Bell, & Johnson, 2004; see also cooperative syndromes in cooperative breeding meerkats:  
472 Clutton-Brock, Russell, & Sharpe, 2003; English, Nakagawa, & Clutton-Brock, 2010 and  
473 cichlids: Schürch & Heg, 2010). Social tolerance could as well be functionally related to  
474 variation in other cognitive abilities or styles to negotiate the social landscape, which in turn  
475 affect cooperation (Fiske & Haslam, 1996; Moreira et al., 2013; Seyfarth & Cheney, 2015;  
476 Sih & Del Giudice, 2012). Differences in social awareness or sensitivity, comprising the  
477 ability to monitor the cooperative tendencies of others, may favour the evolution of consistent  
478 individual differences in cooperation (Korman, Voiklis, & Malle, 2015; McNamara, Stephens,  
479 Dall, & Houston, 2009; Seyfarth & Cheney, 2015; cognitive syndromes: Sih & Del Giudice,

480 2012). It was recently demonstrated that chimpanzees high in Extraversion (corresponding to  
481 Assamese' Connectedness) and assumingly more sensitive to inter-individual interactions,  
482 have been more sensitive to inequity in outcomes between themselves and a social partner in  
483 an experimental condition (Brosnan et al., 2015). In sum, homophily in social tolerance in  
484 Assamese macaques may either be related to similar cooperative tendencies or similar social  
485 sensitivity in bonded partners leading to enhanced cooperative success, probably because of  
486 increased trust in compatible partner.

487 Friends show similar neural responses to the same stimuli and thus react to the world around  
488 them in a similar way, presumably due to similar dispositions, pre-existing knowledge,  
489 opinions, interests, and values (Parkinson et al., 2018). Such similar neural responses are  
490 proposed to enhance social interactions and friendship formation via positive affective  
491 processes, increased predictability and facilitated communication (Berger & Calabrese, 1975;  
492 Neyer et al., 1999; Selfhout et al., 2010; van Zalk & Denissen, 2015). The same line of  
493 argument may apply to animal social bonds. Similarity in personality, or possibly social  
494 tolerance traits in particular, may trigger basic neural and physiological mechanisms  
495 (underlying social interactions in humans and other animals: e.g., Brent 2014; Chang et al.,  
496 2013; Dunbar, 2010), in the bond partner in a similar way, which in turn may facilitate  
497 attitudinal or emotionally based partner choice (Fruteau, Voelkl, Van Damme, & Noë, 2009;  
498 Fu et al., 2012; Parkinson et al., 2018; Schino & Aureli, 2009). Koski & Burkhardt (2015)  
499 propose that similar affective states may facilitate behavioural synchrony, contingency and  
500 reciprocity in a cognitively inexpensive way (Brosnan & de Waal, 2002; Fessler & Holbrook,  
501 2014). Not alone that long-term relationships may be reliably maintained via emotionally  
502 based reciprocity (Schino & Aureli, 2016), positive affect and common psychological  
503 mechanisms may allow for quick assessment in bond formation as well, since it is known in

504 humans that similar people relate with each other quite rapidly and without concise choice  
505 (Ambady, Bernieri, & Richeson, 2000; Bahns et al., 2016; Sunnafrank & Ramirez, 2004).

506 Alternative theories in human personality research claim that ‘opposites attract’. Interpersonal  
507 theory (Carson, 1969), proposes that dominance invites submission and vice versa, while  
508 partners mutually reinforce each other’s dispositional tendencies. Self-expansion theory (Aron  
509 & Aron, 1996) suggests that people accommodate to each other’s distinctiveness to expand  
510 their selves. Empirical studies often found mixed evidence. For instance, friends were either  
511 very similar or very different regarding extraversion-introversion (Nelson et al., 2011).

512 Pairings of rhesus macaques in a laboratory setting were successful for females similar in  
513 Emotionality, but only for those males with both dyad members scoring low (but not  
514 moderate or high) on Gentle and Nervous temperament (Capitanio et al., 2015). Yet,  
515 researchers mostly agree that homophily plays an important role in long-term relationships.

516 When people form relationships with dissimilar individuals these are rather short-lived task-  
517 oriented ties, like professional collaborations (Currarini, Jackson, & Pin, 2009; Fu et al., 2012;  
518 McPherson et al., 2001; Moody, 2004; Parkinson et al., 2018; Rivera et al., 2010).

519 Another alternative theoretical account for the observed correlations between personality and  
520 social relationships invokes social influence and predicts that friends may become more  
521 similar over time, and individuals may potentially converge their attitudes to one another to be  
522 more liked (normative) or to be more right (informational) (Cullum & Harton, 2007; Davis &  
523 Rusbult, 2001). Likewise, there is evidence for post pairing adjustment (associated with  
524 improved reproductive success) with reactive partners becoming more proactive in  
525 monogamous fish (Laubu, Dechaume-Moncharmont, Motreuil, & Schweitzer, 2016).

526 Consistent with our finding that personality similarity most likely predicts social bond  
527 formation in Assamese macaques, human studies demonstrated that similarity matters early in  
528 acquaintanceship, and established attitudes, values and personality seem generally less



529 amenable to influence (Bahns et al., 2016; Costa & McCrae, 1992; Papadopoulou, 2016).

530 Still, not many studies considered social influence, and further research is needed especially

531 in the realm of animal social bonds.

532 In fact, human psychology research even goes beyond the statement of selectivity in

533 friendships, and proposes that people engage in niche construction when they seek out social

534 environments, such as friendships (e.g., Kandel, 1978; Bahns et al., 2016; Papadopoulou,

535 2016). In short, Niche Construction Theory (NCT; Odling-Smee, Laland, & Feldman, 2003),

536 refers to evolutionary processes as constant and cyclical transactions between the organisms,

537 their socio-physical environment and their genetic heritage, whereby organisms modify their

538 own (and/or each other's) environments through the metabolic, physiological and behavioural

539 activities, as well as through their choices (Flynn, Laland, Kendal, & Kendal, 2013; Laland,

540 Odling-Smee, & Endler, 2017; Odling-Smee et al., 2013). Recent studies investigated

541 friendship dyads in adults and children in a real-life setting, and newly formed relationships

542 were tracked over some period (Bahns et al., 2016; Papadopoulou, 2016). These studies

543 support previous findings and state that humans actively choose similar minded (e.g., on

544 personality or attitudes) friends to construct stable, satisfying social niches, that are

545 compatible with their dispositions, and further promote cooperation and well-being (Bahns et

546 al., 2016; Caspi & Herbener, 1990; Hampson, 2011; Papadopoulou, 2016; Scarr &

547 McCartney, 1983).

548 In sum, our results support the idea of a fundamental biological basis of homophily as partner

549 choice strategy in human and non-human animals (Apicella et al., 2012; Bahns et al. 2016; Fu

550 et al., 2012; Massen & Koski, 2014). Specifically, homophily in social tolerance traits may

551 play an important role considering the potential relatedness of human personality traits

552 extraversion and agreeableness with the Connectedness domain in Assamese macaques plus

553 the evidence from other primate studies relating personality and social bonds (Massen &

554 Koski, 2014; Morton et al., 2015; Weinstein & Capitanio, 2012). Further, social tolerance is  
555 key in social bonds and cooperative success (e.g., raven: Asakawa-Haas et al., 2016; Massen  
556 et al., 2015; hyena: Drea & Carter, 2009; primates: Hare, Melis, Woods, Hastings, &  
557 Wrangham, 2007; Werdenich & Huber, 2002; theoretical model: Chen, Fu, & Wang, 2009).  
558 To gauge the generality of these findings, additional primate and particularly other animal  
559 studies are needed to elucidate the importance of similarity in social tolerance in the process  
560 of social bond formation.

561

562 **ACKNOWLEDGMENTS**

563 We thank the National Research Council of Thailand (NRCT) and the Department of National  
564 Parks, Wildlife and Plant Conservation (DNP) for permission to conduct this study and for all  
565 the support granted (permit 0002/2424). We are grateful to I. Chatchawarn, J. Prabnasuk, K.  
566 Nitaya T. Wongsnak, M. Pongjantararatien and K. Kreetiyutanont, M. Kumsuk, W. Saenphala  
567 (PKWS) for their cooperation over the years and permission to carry out this study. We thank  
568 A. Koenig and C. Borries, who developed the field site. Our special thanks goes to S.  
569 Jumrudwong, W. Nueornghiyos, N. Juntuch, J. Wanart, R. Intalo, T. Kilawit, N. Pongangan,  
570 B. Klaewklar, N. Bualeng, D. Gutleb, P. Saisawatdikul, K. Srithorn, M. Swagemakers and T.  
571 Wisate for their excellent help in the field, and to P. Saisawatdikul and C. Haunhorst for their  
572 support. We thank Roger Mundry for the permission to use statistical packages developed by  
573 himself. This research was funded by the Deutsche Forschungsgemeinschaft (DFG, German  
574 Research Foundation) – Project number 254142454 / GRK 2070.

575

576 **REFERENCES**

- 577 Adali, S., & Golbeck, J. (2012). Predicting Personality with Social Behavior. In 2012  
578 *IEEE/ACM International Conference on Advances in Social Networks Analysis and*  
579 *Mining* (pp. 302–309). <https://doi.org/10.1109/ASONAM.2012.58>
- 580 Adams, M., Bonaventura, M., Ostner, J., Schulke, O., De Marco, A., Thierry, B., ... Weiss, A.  
581 (2015). Personality Structure and Social Style in Macaques. *Journal of Personality*  
582 *and Social Psychology*, 109(2), 338–353. <https://doi.org/10.1037/pspp0000041>
- 583 Altmann, J. (1974). Observational study of behavior: sampling methods. *Behaviour*, 49, 227–  
584 267. <https://doi.org/http://dx.doi.org/10.1163/156853974X00534>.
- 585 Ambady, N., Bernieri, F. J., & Richeson, J. A. (2000). Toward a histology of social behavior:  
586 Judgmental accuracy from thin slices of the behavioral stream. In M. P. Zanna (Ed.),  
587 *Advances in experimental social psychology* (Vol. 32, pp. 201–271). San Diego, CA:  
588 Academic Press.
- 589 Antal, T., Ohtsuki, H., Wakeley, J., Taylor, P. D., & Nowak, M. A. (2009). Evolution of  
590 cooperation by phenotypic similarity. *Proceedings of the National Academy of*  
591 *Sciences*, 106(21), 8597–8600. <https://doi.org/10.1073/pnas.0902528106>
- 592 Apicella, C. L., Marlowe, F. W., Fowler, J. H., & Christakis, N. A. (2012). Social networks  
593 and cooperation in hunter-gatherers. *Nature*, 481(7382), 497–501.  
594 <https://doi.org/10.1038/nature10736>
- 595 Ariyomo, T. O., & Watt, P. J. (2013). Disassortative mating for boldness decreases  
596 reproductive success in the guppy. *Behavioral Ecology*, 24(6), 1320–1326.  
597 <https://doi.org/10.1093/beheco/art070>
- 598 Aron, A., & Aron, E. N. (1996). Self and self-expansion in relationships. In G. J. O. Fletcher  
599 & J. Fitness (Eds.), *Knowledge structures in close relationships: A social*  
600 *psychological approach* (pp. 325–344). New Jersey: Lawrence Erlbaum Associates.

- 601 Asakawa-Haas, K., Schiestl, M., Bugnyar, T., & Massen, J. J. M. (2016). Partner Choice in  
602 Raven (*Corvus corax*) Cooperation. *PLOS ONE*, *11*(6), e0156962.  
603 <https://doi.org/10.1371/journal.pone.0156962>
- 604 Ashton, M. C., Paunonen, S. V., Helmes, E., & Jackson, D. N. (1998). Kin Altruism,  
605 Reciprocal Altruism, and the Big Five Personality Factors. *Evolution and Human*  
606 *Behavior*, *19*(4), 243–255. [https://doi.org/10.1016/S1090-5138\(98\)00009-9](https://doi.org/10.1016/S1090-5138(98)00009-9)
- 607 Baayen, R. H. (2008). *Analyzing linguistic data: a practical introduction to statistics*.  
608 Cambridge: Cambridge University Press.
- 609 Bahns, A. J., Crandall, C. S., Gillath, O., & Preacher, K. J. (2016). Similarity in relationships  
610 as niche construction: Choice, stability, and influence within dyads in a free choice  
611 environment. *Journal of Personality and Social Psychology*, *112*(2), 329–355.  
612 <https://doi.org/10.1037/pspp0000088>
- 613 Barr, D. J., Levy, R., Scheepers, C., & Tily, H. J. (2013). Random effects structure for  
614 confirmatory hypothesis testing: Keep it maximal. *Journal of Memory and Language*,  
615 *68*(3), 255–278. <https://doi.org/10.1016/j.jml.2012.11.001>
- 616 Bates, D., Mächler, M., Bolker, B., & Walker, S. (2014). Fitting Linear Mixed-Effects Models  
617 using lme4. *Journal of Statistical Software*, *67*, 1–48.  
618 <https://doi.org/10.18637/jss.v067.bates>
- 619 Baumeister, R. F., & Leary, M. R. (1995). The need to belong: desire for interpersonal  
620 attachments as a fundamental human motivation. *Psychological Bulletin*, *117*(3), 497–  
621 529.
- 622 Berger, C. R., & Calabrese, R. J. (1975). Some Explorations in Initial Interaction and Beyond:  
623 Toward a Developmental Theory of Interpersonal Communication. *Human*  
624 *Communication Research*, *1*(2), 99–112. [https://doi.org/10.1111/j.1468-](https://doi.org/10.1111/j.1468-2958.1975.tb00258.x)  
625 [2958.1975.tb00258.x](https://doi.org/10.1111/j.1468-2958.1975.tb00258.x)

- 626 Berghänel, A., Ostner, J., Schröder, U., & Schülke, O. (2011). Social bonds predict future  
627 cooperation in male Barbary macaques, *Macaca sylvanus*. *Animal Behaviour*, *81*(6),  
628 1109–1116. <https://doi.org/10.1016/j.anbehav.2011.02.009>
- 629 Bergmüller, R., Schürch, R., & Hamilton, I. M. (2010). Evolutionary causes and  
630 consequences of consistent individual variation in cooperative behaviour.  
631 *Philosophical Transactions of the Royal Society B: Biological Sciences*, *365*(1553),  
632 2751–2764. <https://doi.org/10.1098/rstb.2010.0124>
- 633 Bergmüller, R., & Taborsky, M. (2007). Adaptive behavioural syndromes due to strategic  
634 niche specialization. *BMC Ecology*, *7*(1), 12. <https://doi.org/10.1186/1472-6785-7-12>
- 635 Blaz, M. (1983). Perceived Extraversion in a Best Friend. *Perceptual and Motor Skills*, *56*(3),  
636 891–894. <https://doi.org/10.2466/pms.1983.56.3.891>
- 637 Bolker, B. M., Brooks, M. E., Clark, C. J., Geange, S. W., Poulsen, J. R., Stevens, M. H. H.,  
638 & White, J.-S. S. (2009). Generalized linear mixed models: a practical guide for  
639 ecology and evolution. *Trends in Ecology & Evolution*, *24*(3), 127–135.  
640 <https://doi.org/10.1016/j.tree.2008.10.008>
- 641 Borries, C., Larney, E., Kreetiyutanont, K., & Koenig, A. (2002). The diurnal primate  
642 community in a dry evergreen forest in Phu Khieo Wildlife Sanctuary, Northeast  
643 Thailand, *50*(1), 75–88.
- 644 Braun, A., & Bugnyar, T. (2012). Social bonds and rank acquisition in raven nonbreeder  
645 aggregations. *Animal Behaviour*, *84*(6), 1507–1515.  
646 <https://doi.org/10.1016/j.anbehav.2012.09.024>
- 647 Brent, L. J. N., Chang, S. W. C., Gariépy, J.-F., & Platt, M. L. (2014). The neuroethology of  
648 friendship. *Annals of the New York Academy of Sciences*, *1316*(1), 1–17.  
649 <https://doi.org/10.1111/nyas.12315>
- 650 Brosnan, S. F., & de Waal, F. B. M. (2002). A proximate perspective on reciprocal altruism.  
651 *Human Nature*, *13*(1), 129–152. <https://doi.org/10.1007/s12110-002-1017-2>

- 652 Brosnan, S. F., Hopper, L. M., Richey, S., Freeman, H. D., Talbot, C. F., Gosling, S. D., ...  
653 Schapiro, S. J. (2015). Personality influences responses to inequity and contrast in  
654 chimpanzees. *Animal Behaviour*, *101*, 75–87.  
655 <https://doi.org/10.1016/j.anbehav.2014.12.019>
- 656 Brown, S. L., & Brown, R. M. (2006). Selective Investment Theory: Recasting the Functional  
657 Significance of Close Relationships. *Psychological Inquiry*, *17*(1), 1–29.  
658 [https://doi.org/10.1207/s15327965pli1701\\_01](https://doi.org/10.1207/s15327965pli1701_01)
- 659 Byrne, D. (1997). An Overview (and Underview) of Research and Theory within the  
660 Attraction Paradigm. *Journal of Social and Personal Relationships*, *14*(3), 417–431.  
661 <https://doi.org/10.1177/0265407597143008>
- 662 Campbell, W. K., Sedikides, C., Reeder, G. D., & Elliot, A. J. (2000). Among friends? An  
663 examination of friendship and the self-serving bias. *British Journal of Social  
664 Psychology*, *39*(2), 229–239. <https://doi.org/10.1348/014466600164444>
- 665 Campenni, M., & Schino, G. (2014). Partner choice promotes cooperation: The two faces of  
666 testing with agent-based models. *Journal of Theoretical Biology*, *344*, 49–55.  
667 <https://doi.org/10.1016/j.jtbi.2013.11.019>
- 668 Capitanio, J. P., Blozis, S. A., Snarr, J., Steward, A., & McCowan, B. J. (2015). Do ‘birds of a  
669 feather flock together’ or do ‘opposites attract’? Behavioral responses and  
670 temperament predict success in pairings of rhesus monkeys in a laboratory setting.  
671 *American Journal of Primatology*, e22464. <https://doi.org/10.1002/ajp.22464>
- 672 Carson, R. C. (1969). *Interaction concepts of personality*. Oxford, England: Aldin Publishing  
673 Co.
- 674 Caspi, A., & Herbener, E. S. (1990). Continuity and change: Assortative marriage and the  
675 consistency of personality in adulthood. *Journal of Personality and Social  
676 Psychology*, *58*(2), 250–258.

- 677 Caspi, A., Roberts, B. W., & Shiner, R. L. (2005). Personality development: Stability and  
678 change. *Annual Review of Psychology*, 453–484.  
679 <https://doi.org/10.1146/annurev.psych.55.090902.141913>
- 680 Chang, S. W. C., Brent, L. J. N., Adams, G. K., Klein, J. T., Pearson, J. M., Watson, K. K., &  
681 Platt, M. L. (2013). Neuroethology of primate social behavior. *Proceedings of the*  
682 *National Academy of Sciences*, 110(S2), 10387–10394.  
683 <https://doi.org/10.1073/pnas.1301213110>
- 684 Chapais, B. (1995). Alliances as a means of competition in primates: Evolutionary,  
685 developmental, and cognitive aspects. *American Journal of Physical Anthropology*,  
686 38(S21), 115–136. <https://doi.org/10.1002/ajpa.1330380607>
- 687 Chen, X., Fu, F., & Wang, L. (2009). Social tolerance allows cooperation to prevail in an  
688 adaptive environment. *Physical Review E*, 80(5), 51104.  
689 <https://doi.org/10.1103/PhysRevE.80.051104>
- 690 Cheney, D. L. (2011). Extent and limits of cooperation in animals. *Proceedings of the*  
691 *National Academy of Sciences*, 108(S2), 10902–10909.  
692 <https://doi.org/10.1073/pnas.1100291108>
- 693 Chiang, Y.-S., & Takahashi, N. (2011). Network Homophily and the Evolution of the Pay-It-  
694 Forward Reciprocity. *Plos One*, 6(12). <https://doi.org/10.1371/journal.pone.0029188>
- 695 Clore, G. L., & Byrne, D. (1974). A reinforcement-affect model of attraction. *Foundations of*  
696 *Interpersonal Attraction*, 143–170.
- 697 Clutton-Brock, T. H., Russell, A. F., & Sharpe, L. L. (2003). Meerkat helpers do not  
698 specialize in particular activities. *Animal Behaviour*, 66(3), 531–540.  
699 <https://doi.org/10.1006/anbe.2003.2209>
- 700 Connor, R. C., Heithaus, M. R., & Barre, L. M. (2001). Complex social structure, alliance  
701 stability and mating access in a bottlenose dolphin ‘super-alliance’. *Proceedings of the*



- 702 *Royal Society of London B: Biological Sciences*, 268(1464), 263–267.
- 703 <https://doi.org/10.1098/rspb.2000.1357>
- 704 Costa Jr, P. T., & McCrae, R. R. (1992). Four ways five factors are basic. *Personality and*
- 705 *Individual Differences*, 13(6), 653–665. [https://doi.org/10.1016/0191-8869\(92\)90236-I](https://doi.org/10.1016/0191-8869(92)90236-I)
- 706 Cronin, K. A. (2012). Prosocial behaviour in animals: the influence of social relationships,
- 707 communication and rewards. *Animal Behaviour*, 84(5), 1085–1093.
- 708 <https://doi.org/10.1016/j.anbehav.2012.08.009>
- 709 Cullum, J., & Harton, H. C. (2007). Cultural Evolution: Interpersonal Influence, Issue
- 710 Importance, and the Development of Shared Attitudes in College Residence Halls.
- 711 *Personality and Social Psychology Bulletin*, 33(10), 1327–1339.
- 712 <https://doi.org/10.1177/0146167207303949>
- 713 Currarini, S., Jackson, M. O., & Pin, P. (2009). An Economic Model of Friendship:
- 714 Homophily, Minorities, and Segregation. *Econometrica*, 77(4), 1003–1045.
- 715 <https://doi.org/10.3982/ECTA7528>
- 716 Curry, O., & Dunbar, R. M. (2013). Do Birds of a Feather Flock Together? *Human Nature*,
- 717 24(3), 336–347. <https://doi.org/10.1007/s12110-013-9174-z>
- 718 Davis, J. L., & Rusbult, C. E. (2001). Attitude alignment in close relationships. *Journal of*
- 719 *Personality and Social Psychology*, 81(1), 65.
- 720 Denissen, J. J. A., & Penke, L. (2008). Motivational individual reaction norms underlying the
- 721 Five-Factor model of personality: First steps towards a theory-based conceptual
- 722 framework. *Journal of Research in Personality*, 42(5), 1285–1302.
- 723 <https://doi.org/10.1016/j.jrp.2008.04.002>
- 724 DeScioli, P., & Kurzban, R. (2009). The Alliance Hypothesis for Human Friendship. *Plos*
- 725 *One*, 4(6). <https://doi.org/10.1371/journal.pone.0005802>

- 726 Digman, J. M. (1990). Personality Structure: Emergence of the Five-Factor Model. *Annual*  
727 *Review of Psychology*, 41(1), 417–440.  
728 <https://doi.org/10.1146/annurev.ps.41.020190.002221>
- 729 Dingemanse, N. J., Both, C., Drent, P. J., & Tinbergen, J. M. (2004). Fitness consequences of  
730 avian personalities in a fluctuating environment. *Proceedings of the Royal Society B-*  
731 *Biological Sciences*, 271(1541), 847–852. <https://doi.org/10.1098/rspb.2004.2680>
- 732 Dishion, T. J., Patterson, G. R., Stoolmiller, M., & Skinner, M. L. (1991). Family, school, and  
733 behavioral antecedents to early adolescent involvement with antisocial peers.  
734 *Developmental Psychology*, 27(1), 172.
- 735 Dobson, A. J. (2010). *An introduction to generalized linear models* (2nd ed.). Chapman and  
736 Hall/CRC. Boca Raton.
- 737 Drea, C. M., & Carter, A. N. (2009). Cooperative problem solving in a social carnivore.  
738 *Animal Behaviour*, 78(4), 967–977. <https://doi.org/10.1016/j.anbehav.2009.06.030>
- 739 Dunbar, R. I. M. (2010). The social role of touch in humans and primates: Behavioural  
740 function and neurobiological mechanisms. *Neuroscience & Biobehavioral Reviews*,  
741 34(2), 260–268. <https://doi.org/10.1016/j.neubiorev.2008.07.001>
- 742 Dunbar, R. I. M. (2018). The Anatomy of Friendship. *Trends in Cognitive Sciences*, 22(1),  
743 32–51. <https://doi.org/10.1016/j.tics.2017.10.004>
- 744 Ebenau, A., Penke, L., Ostner, J., & Schülke, O. (under review). Integrative personality  
745 assessment in wild Assamese macaques (*Macaca assamensis*). *Journal of*  
746 *Comparative Psychology*
- 747 Engelmann, J. M., & Herrmann, E. (2016). Chimpanzees Trust Their Friends. *Current*  
748 *Biology*, 26(2), 252–256. <https://doi.org/10.1016/j.cub.2015.11.037>
- 749 Engelmann, J. M., Herrmann, E., & Tomasello, M. (2015). Chimpanzees trust conspecifics to  
750 engage in low-cost reciprocity. *Proceedings of the Royal Society of London B:*  
751 *Biological Sciences*, 282(1801). <https://doi.org/10.1098/rspb.2014.2803>

- 752 English, S., Nakagawa, S., & Clutton-Brock, T. H. (2010). Consistent individual differences  
753 in cooperative behaviour in meerkats (*Suricata suricatta*). *Journal of Evolutionary*  
754 *Biology*, 23(8), 1597–1604. <https://doi.org/10.1111/j.1420-9101.2010.02025.x>
- 755 Feiler, D. C., & Kleinbaum, A. M. (2015). Popularity, Similarity, and the Network  
756 Extraversion Bias. *Psychological Science*, 26(5), 593–603.  
757 <https://doi.org/10.1177/0956797615569580>
- 758 Fessler, D. M. T., & Holbrook, C. (2014). Marching into battle: synchronized walking  
759 diminishes the conceptualized formidability of an antagonist in men. *Biology Letters*,  
760 10(8), 20140592. <https://doi.org/10.1098/rsbl.2014.0592>
- 761 Fidell, L. S., & Tabachnick, B. G. (2003). Preparatory data analysis. In J. A. Schinka & W. F.  
762 Velicer (Eds.), *Handbook of psychology: Research methods in psychology* (Vol. 2, pp.  
763 115–141). New Jersey: John Wiley & Sons.
- 764 Field, A. (2000). *Discovering statistics using SPSS for Windows: Advanced techniques for*  
765 *beginners (Introducing Statistical Methods series)*. Sage publications.
- 766 Fiske, A. P., & Haslam, N. (1996). Social cognition is thinking about relationships. *Current*  
767 *Directions in Psychological Science*, 5(5), 143–148.
- 768 Flynn, E. G., Laland, K. N., Kendal, R. L., & Kendal, J. R. (2013). Target article with  
769 commentaries: Developmental niche construction. *Developmental Science*, 16(2),  
770 296–313. <https://doi.org/10.1111/desc.12030>
- 771 Forstmeier, W., & Schielzeth, H. (2011). Cryptic multiple hypotheses testing in linear models:  
772 overestimated effect sizes and the winner’s curse. *Behavioral Ecology and*  
773 *Sociobiology*, 65(1), 47–55. <https://doi.org/10.1007/s00265-010-1038-5>
- 774 Fowler, J. H., Settle, J. E., & Christakis, N. A. (2011). Correlated genotypes in friendship  
775 networks. *Proceedings of the National Academy of Sciences of the United States of*  
776 *America*, 108(5), 1993–1997. <https://doi.org/10.1073/pnas.1011687108>

- 777 Fox, J., & Weisberg, S. (2011). *An R Companion to Applied Regression* (2nd ed.). Sage:  
778       Thousand Oaks CA.
- 779 Fu, F., Nowak, M. A., Christakis, N. A., & Fowler, J. H. (2012). The Evolution of  
780       Homophily. *Scientific Reports*, 2, 845. <https://doi.org/10.1038/srep00845>
- 781 Gabriel, P. O., & Black, J. M. (2012). Behavioural Syndromes, Partner Compatibility and  
782       Reproductive Performance in Steller's Jays. *Ethology*, 118(1), 76–86.  
783       <https://doi.org/10.1111/j.1439-0310.2011.01990.x>
- 784 Gilby, I. C., Brent, L. J. N., Wroblewski, E. E., Rudicell, R. S., Hahn, B. H., Goodall, J., &  
785       Pusey, A. E. (2013). Fitness benefits of coalitionary aggression in male chimpanzees.  
786       *Behavioral Ecology and Sociobiology*, 67(3), 373–381.  
787       <https://doi.org/10.1007/s00265-012-1457-6>
- 788 Hampson, S. E. (2011). Personality Processes: Mechanisms by Which Personality Traits ‘Get  
789       Outside the Skin’. *Annual Review of Psychology*, 63(1), 315–339.  
790       <https://doi.org/10.1146/annurev-psych-120710-100419>
- 791 Hirsh, J. B., & Peterson, J. B. (2009). Extraversion, neuroticism, and the prisoner's dilemma.  
792       *Personality and Individual Differences*, 46(2), 254–256.  
793       <https://doi.org/10.1016/j.paid.2008.10.006>
- 794 Hruschka, D. J., & Henrich, J. (2006). Friendship, cliquishness, and the emergence of  
795       cooperation. *Journal of Theoretical Biology*, 239(1), 1–15.  
796       <https://doi.org/10.1016/j.jtbi.2005.07.006>
- 797 Ilmarinen, V.-J., Vainikainen, M.-P., Verkasalo, M. J., & Lönnqvist, J.-E. (2017).  
798       Homophilous Friendship Assortment Based on Personality Traits and Cognitive  
799       Ability in Middle Childhood: The Moderating Effect of Peer Network Size. *European*  
800       *Journal of Personality*, 31(3), 208–219. <https://doi.org/10.1002/per.2095>
- 801 Jensen-Campbell, L. A., Adams, R., Perry, D. G., Workman, K. A., Furdella, J. Q., & Egan,  
802       S. K. (2002). Agreeableness, extraversion, and peer relations in early adolescence:

- 803           Winning friends and deflecting aggression. *Journal of Research in Personality*, 36(3),  
804           224–251. <https://doi.org/10.1006/jrpe.2002.2348>
- 805   John, O., Srivastava, S., & Pervin, L. (1999). The Big Five trait taxonomy: History,  
806           measurement, and theoretical perspectives. In L. A. Pervin & O. P. John (Eds.),  
807           *Handbook of Personality: Theory and Research* (Vol. 2, pp. 102–138). New York:  
808           Guilford Press.
- 809   Kalbitz, J., Ostner, J., & Schülke, O. (2016). Strong, equitable and long-term social bonds in  
810           the dispersing sex in Assamese macaques. *Animal Behaviour*, 113, 13–22.  
811           <https://doi.org/10.1016/j.anbehav.2015.11.005>
- 812   Kandel, D. B. (1978). Homophily, Selection, and Socialization in Adolescent Friendships.  
813           *American Journal of Sociology*, 84(2), 427–436. <https://doi.org/10.1086/226792>
- 814   King, J. E., & Figueredo, A. J. (1997). The Five-Factor Model plus Dominance in  
815           Chimpanzee Personality. *Journal of Research in Personality*, 31(2), 257–271.  
816           <https://doi.org/10.1006/jrpe.1997.2179>
- 817   Klohnen, E. C., & Luo, S. (2003). Interpersonal attraction and personality: What is attractive–  
818           self similarity, ideal similarity, complementarity or attachment security? *Journal of*  
819           *Personality and Social Psychology*, 85(4), 709.
- 820   Koole, S. L., Jager, W., van den Berg, A. E., Vlek, C. A., & Hofstee, W. K. (2001). On the  
821           social nature of personality: Effects of extraversion, agreeableness, and feedback  
822           about collective resource use on cooperation in a resource dilemma. *Personality and*  
823           *Social Psychology Bulletin*, 27(3), 289–301.  
824           <https://doi.org/doi.org/10.1177/0146167201273003>
- 825   Korman, J., Voiklis, J., & Malle, B. F. (2015). The social life of cognition. *The Changing*  
826           *Face of Cognition*, 135, 30–35. <https://doi.org/10.1016/j.cognition.2014.11.005>
- 827   Koski, S. E. (2014). Broader horizons for animal personality research. *Ecology and Evolution*,  
828           2(70), 1–6. <https://doi.org/10.3389/fevo.2014.00070>

- 829 Koski, S. E., & Burkart, J. M. (2015). Common marmosets show social plasticity and group-  
830 level similarity in personality. *Scientific Reports*, 5, 8878.  
831 <https://doi.org/10.1038/srep08878>
- 832 Laakasuo, M., Rotkirch, A., Berg, V., & Jokela, M. (2017). The Company You Keep:  
833 Personality and Friendship Characteristics. *Social Psychological and Personality*  
834 *Science*, 8(1), 66–73. <https://doi.org/10.1177/1948550616662126>
- 835 Laland, K., Odling-Smee, J., & Endler, J. (2017). Niche construction, sources of selection and  
836 trait coevolution. *Interface Focus*, 7(5), 20160147.  
837 <https://doi.org/10.1098/rsfs.2016.0147>
- 838 Laubu, C., Dechaume-Moncharmont, F.-X., Motreuil, S., & Schweitzer, C. (2016).  
839 Mismatched partners that achieve postpairing behavioral similarity improve their  
840 reproductive success. *Science Advances*, 2(3), e1501013.  
841 <https://doi.org/10.1126/sciadv.1501013>
- 842 Lu, L., & Argyle, M. (1991). Happiness and cooperation. *Personality and Individual*  
843 *Differences*, 12(10), 1019–1030.
- 844 Maaß, U., Lämmle, L., Bensch, D., & Ziegler, M. (2016). Narcissists of a Feather Flock  
845 Together: Narcissism and the Similarity of Friends. *Personality and Social Psychology*  
846 *Bulletin*, 42(3), 366–384. <https://doi.org/10.1177/0146167216629114>
- 847 Majolo, B., Ames, K., Brumpton, R., Garratt, R., Hall, K., & Wilson, N. (2006). Human  
848 friendship favours cooperation in the Iterated Prisoner’s Dilemma. *Behaviour*,  
849 143(11), 1383–1395. <https://doi.org/10.1163/156853906778987506>
- 850 Markey, P. M., & Kurtz, J. E. (2006). Increasing Acquaintanceship and Complementarity of  
851 Behavioral Styles and Personality Traits Among College Roommates. *Personality and*  
852 *Social Psychology Bulletin*, 32(7), 907–916.  
853 <https://doi.org/10.1177/0146167206287129>

- 854 Marshall-Pescini, S., Schwarz, J. F. L., Kostelnik, I., Virányi, Z., & Range, F. (2017).  
855 Importance of a species' socioecology: Wolves outperform dogs in a conspecific  
856 cooperation task. *Proceedings of the National Academy of Sciences*, *114*(44), 11793–  
857 11798. <https://doi.org/10.1073/pnas.1709027114>
- 858 Massen, J. J. M. (2017). Friendships in Animals. In J. Vonk & T. Shackelford (Eds.),  
859 *Encyclopedia of Animal Cognition and Behavior* (pp. 1–6). Cham: Springer  
860 International Publishing.
- 861 Massen, J. J. M., & Koski, S. E. (2014). Chimps of a feather sit together: chimpanzee  
862 friendships are based on homophily in personality. *Evolution and Human Behavior*,  
863 *35*(1), 1–8. <https://doi.org/10.1016/j.evolhumbehav.2013.08.008>
- 864 Massen, J. J. M., Ritter, C., & Bugnyar, T. (2015). Tolerance and reward equity predict  
865 cooperation in ravens (*Corvus corax*). *Scientific Reports*, *5*, 15021.  
866 <https://doi.org/10.1038/srep15021>
- 867 Massen, J., Sterck, E., & Vos, H. de. (2010). Close social associations in animals and humans:  
868 functions and mechanisms of friendship. *Behaviour*, *147*(11), 1379–1412.  
869 <https://doi.org/10.1163/000579510X528224>
- 870 McNamara, J. M., Stephens, P. A., Dall, S. R., & Houston, A. I. (2009). Evolution of trust and  
871 trustworthiness: social awareness favours personality differences. *Proceedings of the*  
872 *Royal Society B: Biological Sciences*, *276*(1657), 605–613.  
873 <https://doi.org/10.1098/rspb.2008.1182>
- 874 McPherson, M., Smith-Lovin, L., & Cook, J. M. (2001). Birds of a feather: Homophily in  
875 social networks. *Annual Review of Sociology*, *27*, 415–444.  
876 <https://doi.org/10.1146/annurev.soc.27.1.415>
- 877 Meunier, H. (2018). The Pertinence of Studying Neuroethology in Nonhuman Primates for  
878 Human Behavior in Groups and Organizations. *Organizational Research Methods*.  
879 <https://doi.org/10.1177/1094428118756741>

- 880 Molesti, S., & Majolo, B. (2016). Cooperation in wild Barbary macaques: factors affecting  
881 free partner choice. *Animal Cognition*, *19*(1), 133–146.  
882 <https://doi.org/10.1007/s10071-015-0919-4>
- 883 Moody, J. (2004). The structure of a social science collaboration network: Disciplinary  
884 cohesion from 1963 to 1999. *American Sociological Review*, *69*(2), 213–238.  
885 <https://doi.org/10.1177/000312240406900204>
- 886 Moreira, J., Vukov, J., Sousa, C., Santos, F. C., d'Almeida, A. F., Santos, M. D., & Pacheco,  
887 J. M. (2013). Individual memory and the emergence of cooperation. *Animal*  
888 *Behaviour*, *85*(1), 233–239. <https://doi.org/10.1016/j.anbehav.2012.10.030>
- 889 Morton, F. B., Weiss, A., Buchanan-Smith, H. M., & Lee, P. C. (2015). Capuchin monkeys  
890 with similar personalities have higher-quality relationships independent of age, sex,  
891 kinship and rank. *Animal Behaviour*, *105*, 163–171.  
892 <https://doi.org/10.1016/j.anbehav.2015.04.013>
- 893 Nelson, P. A., Thorne, A., & Shapiro, L. A. (2011). I'm Outgoing and She's Reserved: The  
894 Reciprocal Dynamics of Personality in Close Friendships in Young Adulthood.  
895 *Journal of Personality*, *79*(5), 1113–1147. [https://doi.org/10.1111/j.1467-](https://doi.org/10.1111/j.1467-6494.2011.00719.x)  
896 [6494.2011.00719.x](https://doi.org/10.1111/j.1467-6494.2011.00719.x)
- 897 Neyer, F. J., Banse, R., & Asendorpf, J. B. (1999). The Role of Projection and Empathic  
898 Accuracy in Dyadic Perception between Older Twins. *Journal of Social and Personal*  
899 *Relationships*, *16*(4), 419–442. <https://doi.org/10.1177/0265407599164001>
- 900 Noë, R. (2006). Cooperation experiments: coordination through communication versus acting  
901 apart together. *Animal Behaviour*, *71*(1), 1–18.  
902 <https://doi.org/10.1016/j.anbehav.2005.03.037>
- 903 Nowak MA, Tarnita CE, Antal T (2010). Evolutionary dynamics in structured populations.  
904 *Philosophical Transactions of the Royal Society B: Biological Sciences*, *365*, 19–30.  
905 <https://doi.org/10.1098/rstb.2009.0215>



- 906 Odling-Smee, J., Erwin, D. H., Palkovacs, E. P., Feldman, M. W., Laland, K. N., & Handling  
907 Editor James Thomson. (2013). Niche Construction Theory: A Practical Guide for  
908 Ecologists. *The Quarterly Review of Biology*, 88(1), 3–28.  
909 <https://doi.org/10.1086/669266>
- 910 Olson, K. R., & Spelke, E. S. (2008). Foundations of cooperation in young children.  
911 *Cognition*, 108(1), 222–231. <https://doi.org/10.1016/j.cognition.2007.12.003>
- 912 Ostner, J., Heistermann, M., & Schülke, O. (2008). Dominance, aggression and physiological  
913 stress in wild male Assamese macaques (*Macaca assamensis*). *Hormones and*  
914 *Behavior*, 54(5), 613–619. <https://doi.org/10.1016/j.yhbeh.2008.05.020>
- 915 Ostner, J., & Schülke, O. (2014). The evolution of social bonds in primate males. *Behaviour*,  
916 151(7), 871 – 906. <https://doi.org/10.1163/1568539X-00003191>
- 917 Ostner, J., & Schülke, O. (2018). Chapter Four - Linking Sociality to Fitness in Primates: A  
918 Call for Mechanisms. In M. Naguib, L. Barrett, S. D. Healy, J. Podos, L. W. Simmons,  
919 & M. Zuk (Eds.), *Advances in the Study of Behavior* (Vol. 50, pp. 127–175).  
920 Academic Press. <https://doi.org/10.1016/bs.asb.2017.12.001>
- 921 Ostner, J., Vigilant, L., Bhagavatula, J., Franz, M., & Schülke, O. (2013). Stable heterosexual  
922 associations in a promiscuous primate. *Animal Behaviour*, 86(3), 623–631.  
923 <https://doi.org/10.1016/j.anbehav.2013.07.004>
- 924 Papadopoulou, M. (2016). The ‘space’ of friendship: young children’s understandings and  
925 expressions of friendship in a reception class. *Early Child Development and Care*,  
926 186(10), 1544–1558.
- 927 Parkinson, C., Kleinbaum, A. M., & Wheatley, T. (2018). Similar neural responses predict  
928 friendship. *Nature Communications*, 9(1), 332. [https://doi.org/10.1038/s41467-017-](https://doi.org/10.1038/s41467-017-02722-7)  
929 [02722-7](https://doi.org/10.1038/s41467-017-02722-7)

- 930 Perry, S., Barrett, H. C., & Manson, J. H. (2004). White-faced capuchin monkeys show triadic  
931 awareness in their choice of allies. *Animal Behaviour*, *67*(1), 165–170.  
932 <https://doi.org/10.1016/j.anbehav.2003.04.005>
- 933 Quinn, G. P., & Keough, M. J. (2002). *Experimental design and data analysis for biologists*.  
934 Cambridge University Press.
- 935 R Core Team (2017). R: A language and environment for statistical computing. R Foundation  
936 for Statistical Computing, Vienna, Austria. URL <http://www.R-project.org/>.
- 937 Rand, D. G., & Nowak, M. A. (2013). Human cooperation. *Trends in Cognitive Sciences*,  
938 *17*(8), 413–425. <https://doi.org/10.1016/j.tics.2013.06.003>
- 939 Rangassamy, M., Dalmás, M., Féron, C., Gouat, P., & Rödel, H. G. (2015). Similarity of  
940 personalities speeds up reproduction in pairs of a monogamous rodent. *Animal*  
941 *Behaviour*, *103*, 7–15. <https://doi.org/10.1016/j.anbehav.2015.02.007>
- 942 Réale, D., Reader, S. M., Sol, D., McDougall, P. T., & Dingemanse, N. J. (2007). Integrating  
943 animal temperament within ecology and evolution. *Biological Reviews*, *82*(2), 291–  
944 318. <https://doi.org/10.1111/j.1469-185X.2007.00010.x>
- 945 Riolo, R. L., Cohen, M. D., & Axelrod, R. (2001). Evolution of cooperation without  
946 reciprocity. *Nature*, *414*(6862), 441–443.
- 947 Rivera, M. T., Soderstrom, S. B., & Uzzi, B. (2010). Dynamics of Dyads in Social Networks:  
948 Assortative, Relational, and Proximity Mechanisms. *Annual Review of Sociology*,  
949 *36*(1), 91–115. <https://doi.org/10.1146/annurev.soc.34.040507.134743>
- 950 Roberts, B. W., Kuncel, N. R., Shiner, R., Caspi, A., & Goldberg, L. R. (2007). The Power of  
951 Personality: The Comparative Validity of Personality Traits, Socioeconomic Status,  
952 and Cognitive Ability for Predicting Important Life Outcomes. *Perspectives on*  
953 *Psychological Science*, *2*(4), 313–345. [https://doi.org/10.1111/j.1745-](https://doi.org/10.1111/j.1745-6916.2007.00047.x)  
954 [6916.2007.00047.x](https://doi.org/10.1111/j.1745-6916.2007.00047.x)

- 955 Ross, S. R., Rausch, M. K., & Canada, K. E. (2003). Competition and Cooperation in the  
956 Five-Factor Model: Individual Differences in Achievement Orientation. *The Journal*  
957 *of Psychology*, 137(4), 323–337. <https://doi.org/10.1080/00223980309600617>
- 958 Sánchez-Tójar, A., Schroeder, J., & Farine, D. R. (2018). A practical guide for inferring  
959 reliable dominance hierarchies and estimating their uncertainty. *Journal of Animal*  
960 *Ecology*, 87(3), 594–608. <https://doi.org/10.1111/1365-2656.12776>
- 961 Scarr, S., & McCartney, K. (1983). How People Make Their Own Environments: A Theory of  
962 Genotype → Environment Effects. *Child Development*, 54(2), 424–435.  
963 <https://doi.org/10.2307/1129703>
- 964 Schino, G. (2007). Grooming and agonistic support: a meta-analysis of primate reciprocal  
965 altruism. *Behavioral Ecology*, 18(1), 115–120. <https://doi.org/10.1093/beheco/arl045>
- 966 Schino, G., & Aureli, F. (2009). Chapter 2 Reciprocal Altruism in Primates: Partner Choice,  
967 Cognition, and Emotions. In *Advances in the Study of Behavior* (Vol. Volume 39, pp.  
968 45–69). Academic Press. [https://doi.org/10.1016/S0065-3454\(09\)39002-6](https://doi.org/10.1016/S0065-3454(09)39002-6)
- 969 Schino, G., & Aureli, F. (2016). Reciprocity in group-living animals: partner control versus  
970 partner choice. *Biological Reviews*, n/a-n/a. <https://doi.org/10.1111/brv.12248>
- 971 Schmid, V. S., & de Vries, H. (2013). Finding a dominance order most consistent with a  
972 linear hierarchy: an improved algorithm for the I&SI method. *Animal Behaviour*,  
973 86(5), 1097–1105. <https://doi.org/10.1016/j.anbehav.2013.08.019>
- 974 Schuett, W., Dall, S. R. X., & Royle, N. J. (2011). Pairs of zebra finches with similar  
975 ‘personalities’ make better parents. *Animal Behaviour*, 81(3), 609–618.  
976 <https://doi.org/10.1016/j.anbehav.2010.12.006>
- 977 Schülke, O., Bhagavatula, J., Vigilant, L., & Ostner, J. (2010). Social Bonds Enhance  
978 Reproductive Success in Male Macaques. *Current Biology*, 20(24), 2207–2210.  
979 <https://doi.org/10.1016/j.cub.2010.10.058>

- 980 Schürch, R., & Heg, D. (2010). Variation in helper type affects group stability and  
981 reproductive decisions in a cooperative breeder. *Ethology*, *116*(3), 257–269.  
982 <https://doi.org/10.1111/j.1439-0310.2009.01738.x>
- 983 Selfhout, M., Burk, W., Branje, S., Denissen, J., van Aken, M., & Meeus, W. (2010).  
984 Emerging Late Adolescent Friendship Networks and Big Five Personality Traits: A  
985 Social Network Approach. *Journal of Personality*, *78*(2), 509–538.  
986 <https://doi.org/10.1111/j.1467-6494.2010.00625.x>
- 987 Selfhout, M. H., Branje, S. J., & Meeus, W. H. (2007). Similarity in adolescent best  
988 friendships: The role of gender. *Netherlands Journal of Psychology*, *63*(2), 42–48.  
989 <https://doi.org/10.1007/BF03061061>
- 990 Seyfarth, R. M., & Cheney, D. L. (2012). The Evolutionary Origins of Friendship. *Annual*  
991 *Review of Psychology*, *63*(1), 153–177. [https://doi.org/10.1146/annurev-psych-](https://doi.org/10.1146/annurev-psych-120710-100337)  
992 [120710-100337](https://doi.org/10.1146/annurev-psych-120710-100337)
- 993 Seyfarth, R. M., & Cheney, D. L. (2015). Social cognition. *Animal Behaviour*, *103*, 191–202.  
994 <https://doi.org/10.1016/j.anbehav.2015.01.030>
- 995 Shrout, P. E., & Fleiss, J. L. (1979). Intraclass correlations: Uses in assessing rater reliability.  
996 *Psychological Bulletin*, *86*, 420–428. [https://doi.org/http://dx.doi.org/10.1037/0033-](https://doi.org/http://dx.doi.org/10.1037/0033-2909.86.2.420)  
997 [2909.86.2.420](https://doi.org/http://dx.doi.org/10.1037/0033-2909.86.2.420)
- 998 Sih, A., Bell, A., & Johnson, J. C. (2004). Behavioral syndromes: an ecological and  
999 evolutionary overview. *Trends in Ecology & Evolution*, *19*(7), 372–378.  
1000 <https://doi.org/10.1016/j.tree.2004.04.009>
- 1001 Sih, A., & Del Giudice, M. (2012). Linking behavioural syndromes and cognition: a  
1002 behavioural ecology perspective. *Philosophical Transactions of the Royal Society B:*  
1003 *Biological Sciences*, *367*(1603), 2762–2772. <https://doi.org/10.1098/rstb.2012.0216>
- 1004 Silk, J. B. (2002). Using the 'F' -word in primatology. *Behaviour*, *139*, 421–446.  
1005 <https://doi.org/10.1163/156853902760102735>

- 1006 Silk, J. B. (2007). The adaptive value of sociality in mammalian groups. *Philosophical*  
1007 *Transactions of the Royal Society B: Biological Sciences*, 362(1480), 539–559.  
1008 <https://doi.org/10.1098/rstb.2006.1994>
- 1009 Silk, J. B., Alberts, S. C., & Altmann, J. (2006). Social relationships among adult female  
1010 baboons (*Papio cynocephalus*) II. Variation in the quality and stability of social bonds.  
1011 *Behavioral Ecology and Sociobiology*, 61(2), 197–204.  
1012 <https://doi.org/10.1007/s00265-006-0250-9>
- 1013 Silk, J., Cheney, D., & Seyfarth, R. (2013). A practical guide to the study of social  
1014 relationships. *Evolutionary Anthropology: Issues, News, and Reviews*, 22(5), 213–225.  
1015 <https://doi.org/10.1002/evan.21367>
- 1016 Sukmak, M., Wajjwalku, W., Ostner, J., & Schülke, O. (2014). Dominance rank, female  
1017 reproductive synchrony, and male reproductive skew in wild Assamese macaques.  
1018 *Behavioral Ecology and Sociobiology*, 68(7), 1097–1108.  
1019 <https://doi.org/10.1007/s00265-014-1721-z>
- 1020 Sunnafrank, M., & Ramirez, A. (2004). At First Sight: Persistent Relational Effects of Get-  
1021 Acquainted Conversations. *Journal of Social and Personal Relationships*, 21(3), 361–  
1022 379. <https://doi.org/10.1177/0265407504042837>
- 1023 Tkaczynski, P. (2017). *The Behavioural Ecology of Personality in Wild Barbary Macaques*  
1024 (Doctoral dissertation). University of Roehampton, Roehampton.
- 1025 van Aken, M. A. G., & Asendorpf, J. B. (2018). Personality and peer relationships. In K. H.  
1026 Rubin, W. M. Bukowski, & B. Laursen (Eds.), *Handbook of peer interactions,*  
1027 *relationships, and groups* (pp. 159–176). New York, US: Guilford Press.
- 1028 van Zalk, M., & Denissen, J. (2015). Idiosyncratic versus social consensus approaches to  
1029 personality: Self-view, perceived, and peer-view similarity. *Journal of Personality and*  
1030 *Social Psychology*, 109(1), 121. <https://doi.org/10.1037/pspp0000035>

- 1031 Voelkl, B., & Kasper, C. (2009). Social structure of primate interaction networks facilitates  
1032 the emergence of cooperation. *Biology Letters*, rsbl20090204.  
1033 <https://doi.org/10.1098/rsbl.2009.0204>
- 1034 Watts, D. P. (2002). Reciprocity and interchange in the social relationships of wild male  
1035 chimpanzees. *Behaviour*, 139(2), 343–370.  
1036 <https://doi.org/10.1163/156853902760102708>
- 1037 Weinstein, T. A. R., & Capitanio, J. P. (2012). Longitudinal Stability of Friendships in  
1038 Rhesus Monkeys (*Macaca mulatta*): Individual- and Relationship-Level Effects.  
1039 *Journal of Comparative Psychology*, 126(1), 97–108.  
1040 <https://doi.org/10.1037/a0025607>
- 1041 Weiss, A., Inoue-Murayama, M., Hong, K.-W., Inoue, E., Usono, T., Ochiai, T., ... King, J.  
1042 E. (2009). Assessing chimpanzee personality and subjective well-being in Japan.  
1043 *American Journal of Primatology*, 71(4), 283–292. <https://doi.org/10.1002/ajp.20649>
- 1044 Wood, R. I., Kim, J. Y., & Li, G. R. (2016). Cooperation in rats playing the iterated Prisoner's  
1045 Dilemma game. *Animal Behaviour*, 114, 27–35.  
1046 <https://doi.org/10.1016/j.anbehav.2016.01.010>
- 1047 Wrzus, C., & Neyer, F. J. (2016). Co-Development of Personality and Friendships Across the  
1048 Lifespan. *European Psychologist*, 21(4), 254–273. [https://doi.org/10.1027/1016-](https://doi.org/10.1027/1016-9040/a000277)  
1049 [9040/a000277](https://doi.org/10.1027/1016-9040/a000277)
- 1050 Young, C., Majolo, B., Schülke, O., & Ostner, J. (2014). Male social bonds and rank predict  
1051 supporter selection in cooperative aggression in wild Barbary macaques. *Animal*  
1052 *Behaviour*, 95, 23–32. <https://doi.org/10.1016/j.anbehav.2014.06.007>
- 1053 Youyou, W., Stillwell, D., Schwartz, H. A., & Kosinski, M. (2017). Birds of a Feather Do  
1054 Flock Together. *Psychological Science*, 28(3), 276–284.  
1055 <https://doi.org/10.1177/0956797616678187>

- 1056 Ziegler, C.-N., & Golbeck, J. (2007). Investigating interactions of trust and interest similarity.  
1057 *Decision Support Systems*, 43(2), 460–475. <https://doi.org/10.1016/j.dss.2006.11.003>
- 1058 Zuur, A. F., Ieno, E. N., & Elphick, C. S. (2010). A protocol for data exploration to avoid  
1059 common statistical problems. *Methods in Ecology and Evolution*, 1(1), 3–14.  
1060 <https://doi.org/10.1111/j.2041-210X.2009.00001.x>
- 1061
- 1062

1063 **APPENDIX**

1064 **Table A1**

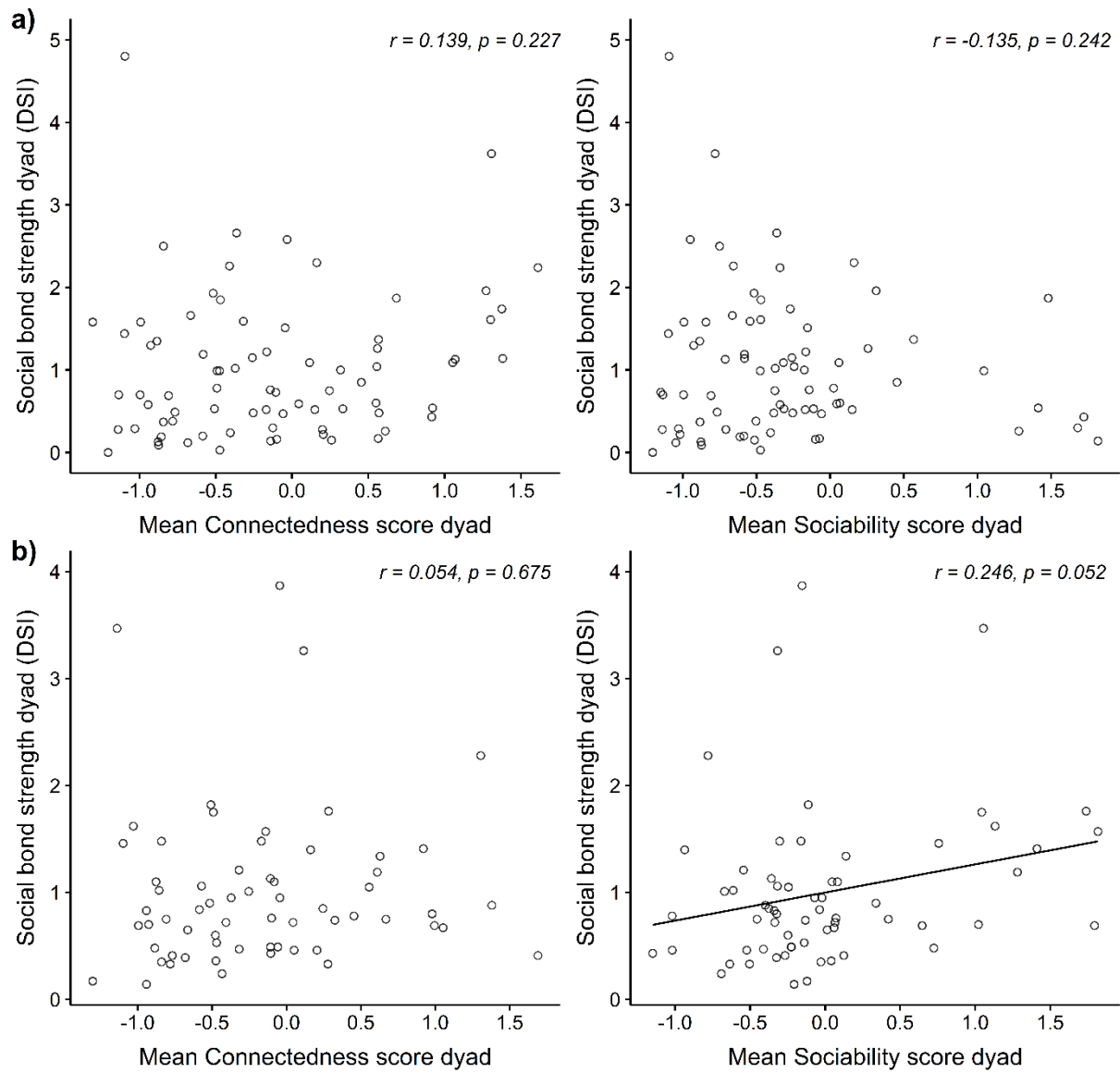
1065 Group composition with age-sex classes at onset of study.

Group	Adult males	Subadult males	Juvenile males	Infant males	Adult females	Juvenile females	Infant females	Total
ASM	8	6	10	3	10	12	3	52
AOM	10	3	8	1	14	10	5	51
ASS	4	2	2	4	9	7	1	28
AOS	5	0	2	2	6	5	1	21
All	27*	11	22	10	39	34	10	153

1066 \*24 adult males were included in the analysis because 3 individuals emigrated.

1067

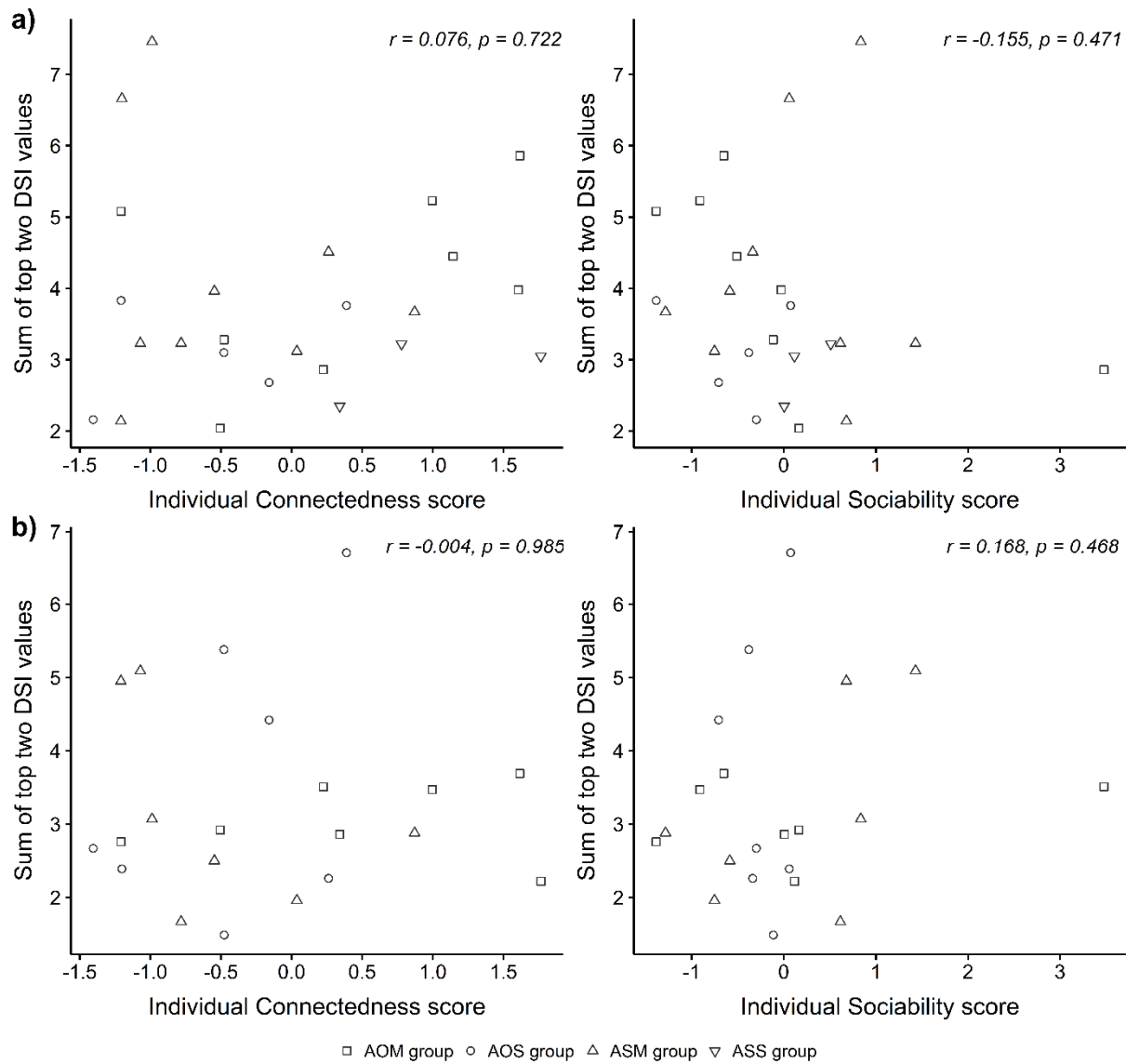




1068

1069 **Figure A1:** Pearson correlation of mean personality scores per dyad with DSI scores for every  
1070 half year period. a) Oct2014–Mar2015 with n=77. b) Oct2015–Mar2016 with n=63.

1071



1072

1073 **Figure A2:** Pearson correlation of individual personality scores with sum of top two DSI  
1074 values for every half year period. a) Oct2014–Mar2015 with  $n=24$ . b) Oct2015–Mar2016 with  
1075  $n=21$ .

1076